



Combined Annual Education Results Report
and Three Year Education Plan
Nov 30, 2017

Accountability Statement

The Annual Education Results Report for the 2016/17 school year and the Education Plan for the three years commencing September 1, 2017 for Living Waters Christian Academy was prepared under the direction of the Board in accordance with its responsibilities under the Private Schools Regulation and the Education Grants Regulation. This document was developed in the context of the provincial government's business and fiscal plans. The Board has used the results reported in the document, to the best of its abilities, to develop the Education Plan and is committed to implementing the strategies contained within the Education Plan to improve student learning and results.

The Board approved this combined Annual Education Results Report for the 2016/2017 school year and the Three Year Education Plan for 2017-2020 on Nov 21st, 2017.

Original Signed
Jason Vance, Board Chair

Nov 21, 2017
Date

Combined 2017 Accountability Pillar Overall Summary (Required for Public/Separate/Francophone/Charter School Authorities and Level 2 Private Schools)

Measure Category	Measure	Living Waters Christian Academy			Alberta			Measure Evaluation		
		Current Result	Prev Year Result	Prev 3 Year Average	Current Result	Prev Year Result	Prev 3 Year Average	Achievement	Improvement	Overall
Safe and Caring Schools	Safe and Caring	94.6	92.2	93.0	89.5	89.5	89.3	Very High	Maintained	Excellent
Student Learning Opportunities	Program of Studies	89.6	88.9	88.6	81.9	81.9	81.5	Very High	Maintained	Excellent
	Education Quality	95.9	96.8	95.5	90.1	90.1	89.6	Very High	Maintained	Excellent
	Drop Out Rate	0.0	0.0	0.8	3.0	3.2	3.3	Very High	Maintained	Excellent
	High School Completion Rate (3 yr)	100.0	92.3	85.4	77.9	76.5	76.1	Very High	Improved	Excellent
Student Learning Achievement (Grades K-9)	PAT: Acceptable	93.8	95.8	90.9	73.4	73.6	73.2	Very High	Maintained	Excellent
	PAT: Excellence	28.9	42.5	30.4	19.5	19.4	18.8	Very High	Maintained	Excellent
Student Learning Achievement (Grades 10-12)	Diploma: Acceptable	90.2	91.0	87.8	83.0	82.7	83.1	Very High	Maintained	Excellent
	Diploma: Excellence	5.9	14.1	16.7	22.2	21.2	21.5	Very Low	Declined	Concern
	Diploma Exam Participation Rate (4+ Exams)	81.0	76.9	75.2	54.9	54.6	53.1	Very High	Maintained	Excellent
	Rutherford Scholarship Eligibility Rate	75.0	63.6	63.6	62.3	60.8	60.8	n/a	Maintained	n/a
Preparation for Lifelong Learning, World of Work, Citizenship	Transition Rate (6 yr)	70.5	51.4	51.6	57.9	59.4	59.3	Very High	Improved	Excellent
	Work Preparation	96.1	93.3	94.5	82.7	82.6	81.9	Very High	Maintained	Excellent
	Citizenship	93.4	92.1	92.4	83.7	83.9	83.6	Very High	Maintained	Excellent
Parental Involvement	Parental Involvement	93.3	93.0	92.1	81.2	80.9	80.7	Very High	Maintained	Excellent
Continuous Improvement	School Improvement	81.3	87.7	87.8	81.4	81.2	80.2	Very High	Declined	Good

Notes:

1. Data values have been suppressed where the number of respondents/students is fewer than 6. Suppression is marked with an asterisk (*).
2. Overall evaluations can only be calculated if both improvement and achievement evaluations are available.
3. Results for the ACOL measures are available in the detailed report: see "ACOL Measures" in the Table of Contents.
4. Aggregated PAT results are based upon a weighted average of percent meeting standards (Acceptable, Excellence). The weights are the number of students enrolled in each course.
5. Participation in Provincial Achievement Tests was impacted by the flooding in June 2013 (Grade 9 only) and by the fires in May to June 2016. Caution should be used when interpreting trends over time for the province and those school authorities affected by these events.
6. Aggregated Diploma results are a weighted average of percent meeting standards (Acceptable, Excellence) on Diploma Examinations. The weights are the number of students writing the Diploma Examination for each course.
7. Caution should be used when interpreting evaluations and results over time for Mathematics 30-1/30-2, as equating was not in place until the 2016/17 school year. Alberta Education does not comment on province wide trends until it has five years of equated examination data.
8. Participation in Diploma Examinations was impacted by the flooding in June 2013 and by the fires in May to June 2016. Caution should be used when interpreting trends over time for the province and those school authorities affected by these events.
9. Weighting of school-awarded marks in diploma courses increased from 50% to 70% in the 2015/2016 school year. Caution should be used when interpreting trends over time.
10. Due to the change from previous data source systems to Provincial Approach to Student Information (PASI), Rutherford Scholarship Eligibility Rate results prior to 2015 are not available.

Outcome One: Alberta's students are successful

Performance Measure	Results (in percentages)					Target	Evaluation			Targets		
	2013	2014	2015	2016	2017	2017	Achievement	Improvement	Overall	2018	2019	2020
Overall percentage of students in Grades 6 and 9 who achieved the acceptable standard on Provincial Achievement Tests (overall cohort results).	92.6	86.4	90.5	95.8	93.8	95	Very High	Maintained	Excellent	95	95	95
Overall percentage of students in Grades 6 and 9 who achieved the standard of excellence on Provincial Achievement Tests (overall cohort results).	21.6	18.9	29.7	42.5	28.9	25	Very High	Maintained	Excellent	25	25	25

Performance Measure	Results (in percentages)					Target	Evaluation			Targets		
	2013	2014	2015	2016	2017	2017	Achievement	Improvement	Overall	2018	2019	2020
Overall percentage of students who achieved the acceptable standard on diploma examinations (overall results).	84.5	87.2	85.0	91.0	90.2	88	Very High	Maintained	Excellent	88	88	88
Overall percentage of students who achieved the standard of excellence on diploma examinations (overall results).	27.8	12.8	23.3	14.1	5.9	20	Very Low	Declined	Concern	21	22	22

Performance Measure	Results (in percentages)					Target	Evaluation			Targets		
	2012	2013	2014	2015	2016	2017	Achievement	Improvement	Overall	2018	2019	2020
High School Completion Rate - Percentage of students who completed high school within three years of entering Grade 10.	89.3	95.0	68.9	92.3	100.0	90	Very High	Improved	Excellent	90	90	90
Drop Out Rate - annual dropout rate of students aged 14 to 18	0.0	0.0	2.4	0.0	0.0	0	Very High	Maintained	Excellent	0	0	0
High school to post-secondary transition rate of students within six years of entering Grade 10.	20.9	55.3	48.2	51.4	70.5	60	Very High	Improved	Excellent	62	63	64
Percentage of Grade 12 students eligible for a Rutherford Scholarship.	n/a	n/a	n/a	63.6	75.0	60	n/a	Maintained	n/a	65	65	65
Percentage of students writing four or more diploma exams within three years of entering Grade 10.	68.7	85.0	63.6	76.9	81.0	70	Very High	Maintained	Excellent	70	70	70

Comment on Results

Transition to Post Secondary in 4 years – This percentage fluctuates because we have a changing number of students who attended school out of province and therefore are not calculated as successful transition.
The excellence on Diploma rates fluctuate from year to year due to the extremely small sample size. Students who struggled were provided opportunities for academic assistance and regular and frequent communication with parents to keep them aware of the student's lack of engagement.

Strategies

Once the numbers are adjusted to reflect the reality of student completion and transition, we demonstrate significant success in these important areas. Many of our students go out of province to attend post-secondary.

Notes:

1. Results have been adjusted to reflect the change from previous data source systems to Provincial Approach to Student Information (PASI).
2. Due to the change from previous data source systems to Provincial Approach to Student Information (PASI), historical Rutherford Scholarship Eligibility Rate results are not available.

3. Aggregated Diploma results are a weighted average of percent meeting standards (Acceptable, Excellence) on Diploma Examinations. The weights are the number of students writing the Diploma Examination for each course. Courses included: English Language Arts 30-1, English Language Arts 30-2, Chemistry 30, Physics 30, Biology 30, Science 30, Social Studies 30-1, Social Studies 30-2.
4. Diploma Examination Participation, High School Completion and High school to Post-secondary Transition rates are based upon a cohort of grade 10 students who are tracked over time.
5. Participation in Diploma Examinations was impacted by the flooding in June 2013 and by the fires in May to June 2016. Caution should be used when interpreting trends over time for the province and those school authorities affected by these events.
6. Data values have been suppressed where the number of respondents/students is fewer than 6. Suppression is marked with an asterisk (*).

Outcome One: Alberta's students are successful (continued)

Performance Measure	Results (in percentages)					Target	Evaluation			Targets		
	2013	2014	2015	2016	2017	2017	Achievement	Improvement	Overall	2018	2019	2020
Percentage of teachers, parents and students who are satisfied that students model the characteristics of active citizenship.	91.6	92.5	92.6	92.1	93.4		Very High	Maintained	Excellent			
Percentage of teachers and parents who agree that students are taught attitudes and behaviours that will make them successful at work when they finish school.	89.9	91.1	99.2	93.3	96.1		Very High	Maintained	Excellent			

<p>Comment on Results The mission and values of the school are foundational to developing the characteristics of active citizenship. <i>A central focus of our program is excellence in character, moral, and ethical development and academics. We believe that students must be prepared to influence positive change in their world.</i></p>
<p>Strategies <i>We will continue to implement the mission and values of the school in all aspects of our educational and extracurricular program.</i> <i>Each class studies the Bible and discusses ethical and moral issues as an important part of their development as citizens. A strong work ethic, care for the less fortunate, and respect for all, is the cornerstone of an educated person. We work with parents and students toward this goal.</i> <i>Parents send their children to Living Waters because they believe that the biblical values which equip students to be successful and ethical citizens are foundational for their children.</i> <i>By providing support for students within the context of our faith, we are able to equip students to be engaged and ethical citizens. The tone and culture of our school is positive and supportive due to the infusion of biblical values into all areas of our curriculum, programs and extracurricular activities.</i></p>

Notes:

1. Data values have been suppressed where the number of respondents/students is fewer than 6. Suppression is marked with an asterisk (*).

Outcome One: Alberta's students are successful (continued)

Performance Measure	Results (in percentages)					Target	Evaluation			Targets		
	2013	2014	2015	2016	2017	2017	Achievement	Improvement	Overall	2018	2019	2020
Percentage of teacher and parent satisfaction that students demonstrate the knowledge, skills and attitudes necessary for lifelong learning. <i>(This measure is required for charter and private school authorities with only K-9 schools)</i>	82.8	90.1	90.4	94.0	86.9		n/a	n/a	n/a			

<p>Strategies <i>Not a required measure.</i></p>
--

Outcome Three: Alberta’s education system is inclusive

Performance Measure	Results (in percentages)					Target	Evaluation			Targets		
	2013	2014	2015	2016	2017	2017	Achievement	Improvement	Overall	2018	2019	2020
Percentage of teacher, parent and student agreement that: students are safe at school, are learning the importance of caring for others, are learning respect for others and are treated fairly in school.	93.1	93.0	93.7	92.2	94.6	95	Very High	Maintained	Excellent	95	95	95

<p>Comment on Results</p> <p><i>Providing a safe, encouraging, respectful learning environment is essential to providing high quality Christian education. With the support of the home we are continually striving to provide such an environment.</i></p>
<p>Strategies</p> <ul style="list-style-type: none"> Continue to promote citizenship through class service projects, addressing student behaviour issues by working with parents, and maintaining high standards of conduct and respect for all. Our school maintains a close community and high behavioural expectations based on the school’s mission statement and core values. Implement strategies to improve access to learning tools such as Office 365, Teacher/Student Dashboard for assignment management, Maplewood for homework, gradebook, and attendance. As much as possible, in the provision of appropriate student programming, special needs students are integrated into the regular classroom. Student council built on the previous council’s programs and introduced “family groups” which bring together students from each grade into year long activity groups to build relationship and have fun together as a community.

Notes:

1. Data values have been suppressed where the number of respondents/students is fewer than 6. Suppression is marked with an asterisk (*).

Outcome Four: Living Waters has excellent teachers, school and school authority leaders

Performance Measure	Results (in percentages)					Target	Evaluation			Targets		
	2013	2014	2015	2016	2017	2017	Achievement	Improvement	Overall	2018	2019	2020
Percentage of teachers, parents and students satisfied with the opportunity for students to receive a broad program of studies including fine arts, career, technology, and health and physical education.	86.8	88.5	88.3	88.9	89.6		Very High	Maintained	Excellent			

<p>Comment on Results</p> <p><i>Living Waters is a small school serving Kindergarten to grade 12 students. We have a very specific mission and we strive to accomplish that task with excellence. We have quite a variety and we offer a range of fine arts, foods, athletics, Spanish, and science courses. For our size, we have a remarkable variety of programs. However, there are always opportunities for improvement.</i></p>
<p>Strategies</p> <p>We will continue to offer the program of studies that our parents expect, as well as be responsive to opportunities to expand or improve our options.</p>

Outcome Five: The education system is well governed and managed

Performance Measure	Results (in percentages)					Target	Evaluation			Targets		
	2013	2014	2015	2016	2017	2017	Achievement	Improvement	Overall	2018	2019	2020
Percentage of teachers, parents and students indicating that their school and schools in their jurisdiction have improved or stayed the same the last three years.	85.7	87.6	88.1	87.7	81.3	85	Very High	Declined	Good	85	85	85
Percentage of teachers and parents satisfied with parental involvement in decisions about their child's education.	88.2	88.4	95.0	93.0	93.3	93	Very High	Maintained	Excellent	93	93	93
Percentage of teachers, parents and students satisfied with the overall quality of basic education.	93.9	93.7	96.0	96.8	95.9	96	Very High	Maintained	Excellent	96	96	96

Comment on Results

We achieved our targets.

Our school has a specific mission and is a school of choice for the families that attend. Many parents are very involved with supporting their child's learning. The administration of the school is guided by the mission of the school and the board has oversight to ensure that the policies and procedures are followed and further support the effective accomplishment of the mission of the school.

Strategies

- *We will continue to communicate the mission of the school and ensure that school program decisions move the school community toward greater achievement of that mission.*
 - Our school maintains a close community and high behavioural expectations based on the school's mission statement and core values.
- Initiatives to promote communication and foster a respectful and responsible community include:
- Parents are the rightful caregivers for their children and we work closely with parents to support students academically, emotionally, and spiritually.
 - Regular online newsletters updates
 - Parent meetings and teacher conferences
 - Teachers communicate with parents through a variety of media
 - Strategies to address behavioural issues focus on character development and involve parents
 - Teachers and staff work hard to create a friendly and respectful environment in the school
 - School has a facebook page which celebrates learning and the student's accomplishments.
 - We use Maplewood admin system which provides parents and students with access to marks and attendance

Notes:

1. Data values have been suppressed where the number of respondents/students is fewer than 6. Suppression is marked with an asterisk (*).

Note:

Budget Summary			
Revenue	AFS 2015-16	AFS 2016-17	Budget 2017-18
<i>Gov't grants</i>	1,364,747	1,358,442	1,268,519
<i>Instructional fees</i>	820,982	828,856	815,580
<i>Gifts & donations</i>	16,886	49,563	14,000
<i>Other</i>	111,272	190,295	15,400
	2,313,887	2,427,156	2,113,499
Expenses			
<i>Salaries & benefits</i>	1,638,001	1,659,799	1,742,815
<i>Services & supplies</i>	496,474	602,969	311,526
<i>Amortization</i>	137,964	137,743	137,000
<i>Other</i>			0
	2,272,439	2,400,511	2,191,341
<i>Credit (Deficit)</i>	41,448	26,645	(91,342)

Capital and Facilities Projects

The board of Living Waters Christian Academy continues to monitor enrollment trends and use the mission and vision of the school as a guide to planning its potential future facilities enhancement and capital projects.

Summary of Facility and Capital Plans

Alberta Education does not provide capital funding to Independent Schools. All capital development requires fundraising efforts by the school community and relies on the generosity of supporters of the school.

Parental Involvement

As an Independent Christian School, Living Waters communicates the mission, philosophy, and values of the school clearly to the community. Parents choose to send their children to Living Waters because they agree that the Faith/Belief perspective expressed by the school aligns with the values they want developed in their children through their K – 12 education.

Parents have the a priori, God given right and responsibility to make decisions related to the education of their child and to be informed regarding all aspects of the child's education.

Timelines and Communication

Living Waters Christian Academy's Annual Education Results Report and Three Year Plan are posted on the school's website.

www.lwca.ab.ca

Information regarding the location of the combined Three Year Education plan and Annual Education Results Report will be communicated to the parent community in the online newsletter.

All accountability reports and financial requirements are submitted to Alberta Education by the required deadlines.

Whistleblower Protection

Living Waters' Whistleblower Policy is available on the school website and is made available to all school staff.

There were no PIDA disclosures or investigations during the 2016/2017 school year.

APPENDIX – Measure Details (OPTIONAL)

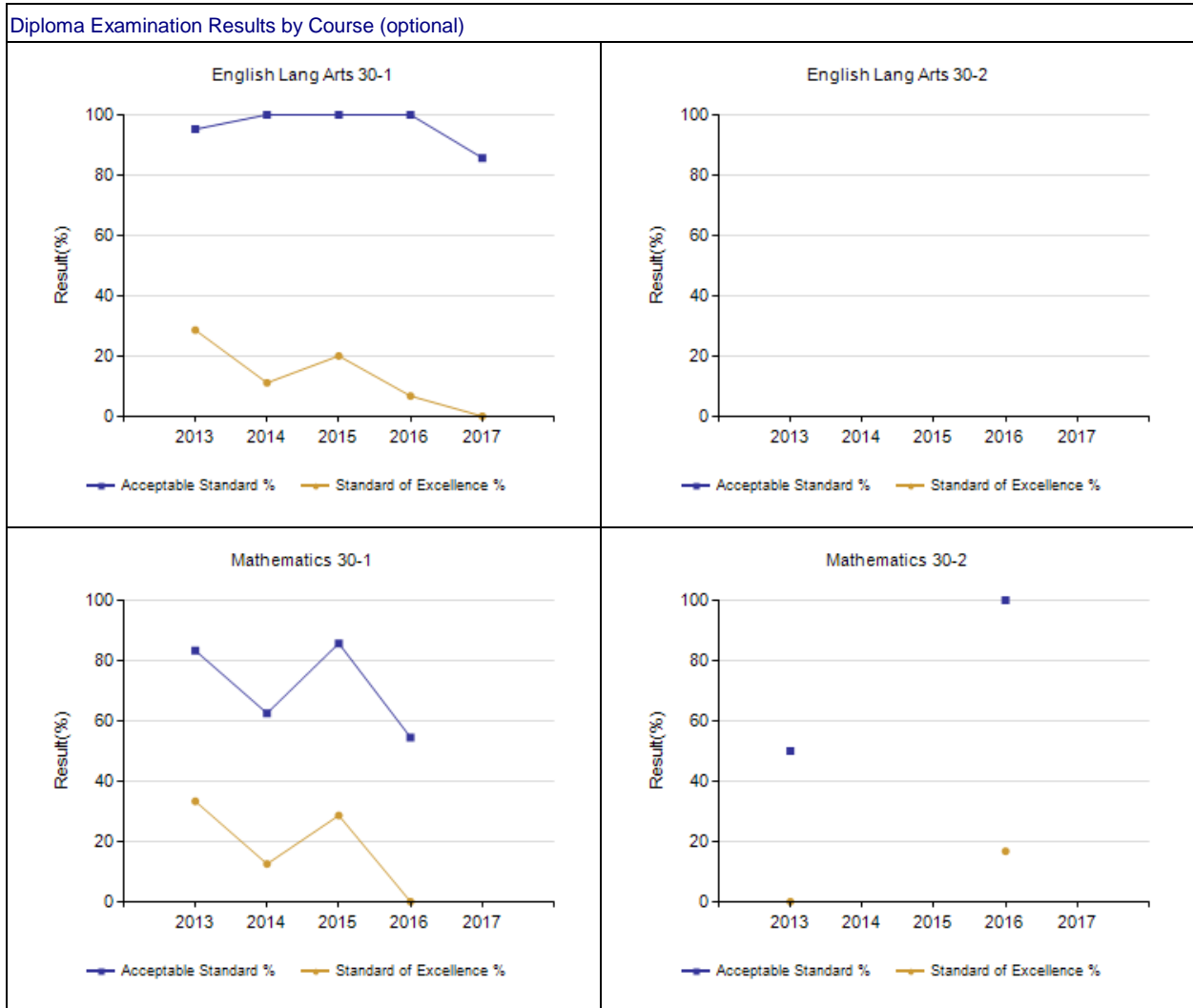
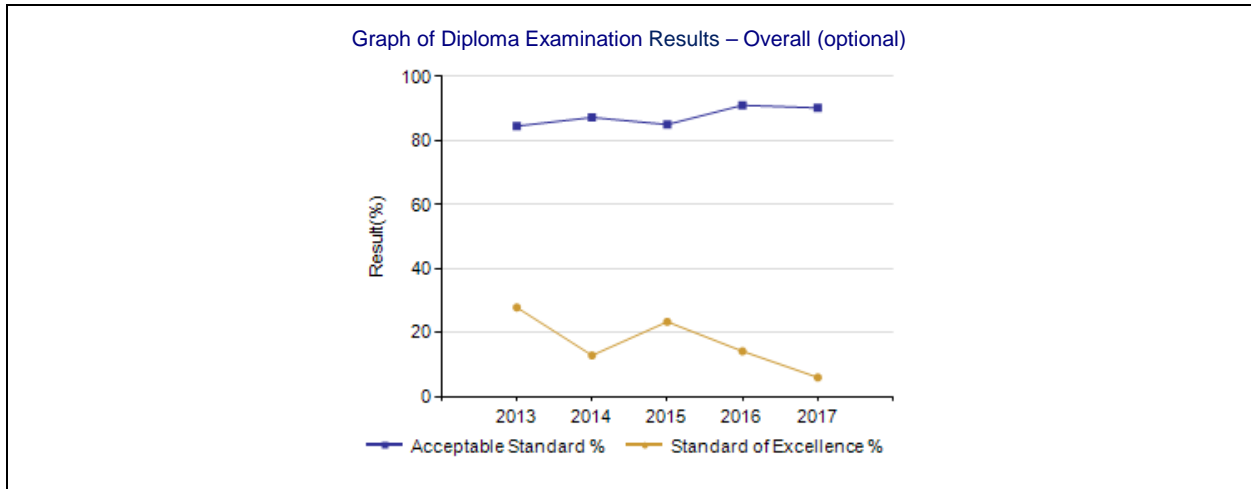
The following pages include tables and graphs that provide detailed data for the performance measures. Authorities may include these under each measure/outcome to provide context and help in interpreting the results.

Diploma Examination Results – Measure Details (OPTIONAL)

Diploma Exam Course by Course Results by Students Writing.													
		Results (in percentages)										Target	
		2013		2014		2015		2016		2017		2017	
		A	E	A	E	A	E	A	E	A	E	A	E
English Lang Arts 30-1	Authority	95.2	28.6	100.0	11.1	100.0	20.0	100.0	6.7	85.7	0.0		
	Province	85.9	10.4	87.6	11.8	86.5	11.4	86.8	10.7	86.5	11.7		
English Lang Arts 30-2	Authority	n/a	n/a	*	*	*	*	*	*	*	*		
	Province	89.4	10.9	89.8	13.1	88.6	11.2	89.1	12.3	89.5	11.4		
Pure Mathematics 30	Authority	n/a	n/a	n/a	n/a	n/a	n/a	n/a	n/a	n/a	n/a		
	Province	59.0	11.4	*	*	n/a	n/a	n/a	n/a	n/a	n/a		
Applied Mathematics 30	Authority	n/a	n/a	n/a	n/a	n/a	n/a	n/a	n/a	n/a	n/a		
	Province	71.4	17.9	n/a	n/a	n/a	n/a	n/a	n/a	n/a	n/a		
Mathematics 30-1	Authority	83.3	33.3	62.5	12.5	85.7	28.6	54.5	0.0	*	*		
	Province	80.9	35.9	75.1	27.9	76.1	31.6	70.7	25.9	73.1	30.7		
Mathematics 30-2	Authority	50.0	0.0	*	*	*	*	100.0	16.7	*	*		
	Province	69.5	9.7	71.3	15.0	73.9	15.5	75.4	16.8	74.7	15.9		
Social Studies 30-1	Authority	100.0	27.8	90.9	0.0	75.0	25.0	100.0	8.3	83.3	0.0		
	Province	85.4	15.2	85.6	14.2	87.1	16.2	84.9	14.3	86.0	14.8		
Social Studies 30-2	Authority	*	*	*	*	*	*	100.0	0.0	100.0	16.7		
	Province	82.2	13.7	83.9	14.8	81.3	12.5	81.1	13.1	80.6	12.6		
Biology 30	Authority	92.9	35.7	*	*	87.5	25.0	100.0	43.8	n/a	n/a		
	Province	84.4	32.2	85.2	31.8	85.8	33.0	85.1	32.4	84.2	32.3		
Chemistry 30	Authority	66.7	28.6	n/a	n/a	81.3	37.5	n/a	n/a	91.7	16.7		
	Province	78.8	31.8	81.5	35.2	82.1	34.2	81.5	34.5	83.1	38.6		
Physics 30	Authority	n/a	n/a	88.9	22.2	n/a	n/a	66.7	16.7	*	*		
	Province	81.5	30.4	83.2	34.3	83.9	35.8	85.8	39.8	85.7	41.8		
Science 30	Authority	n/a	n/a	n/a	n/a	n/a	n/a	n/a	n/a	100.0	0.0		
	Province	84.1	25.8	85.0	25.4	83.9	26.6	84.4	27.6	84.9	28.4		

Notes:

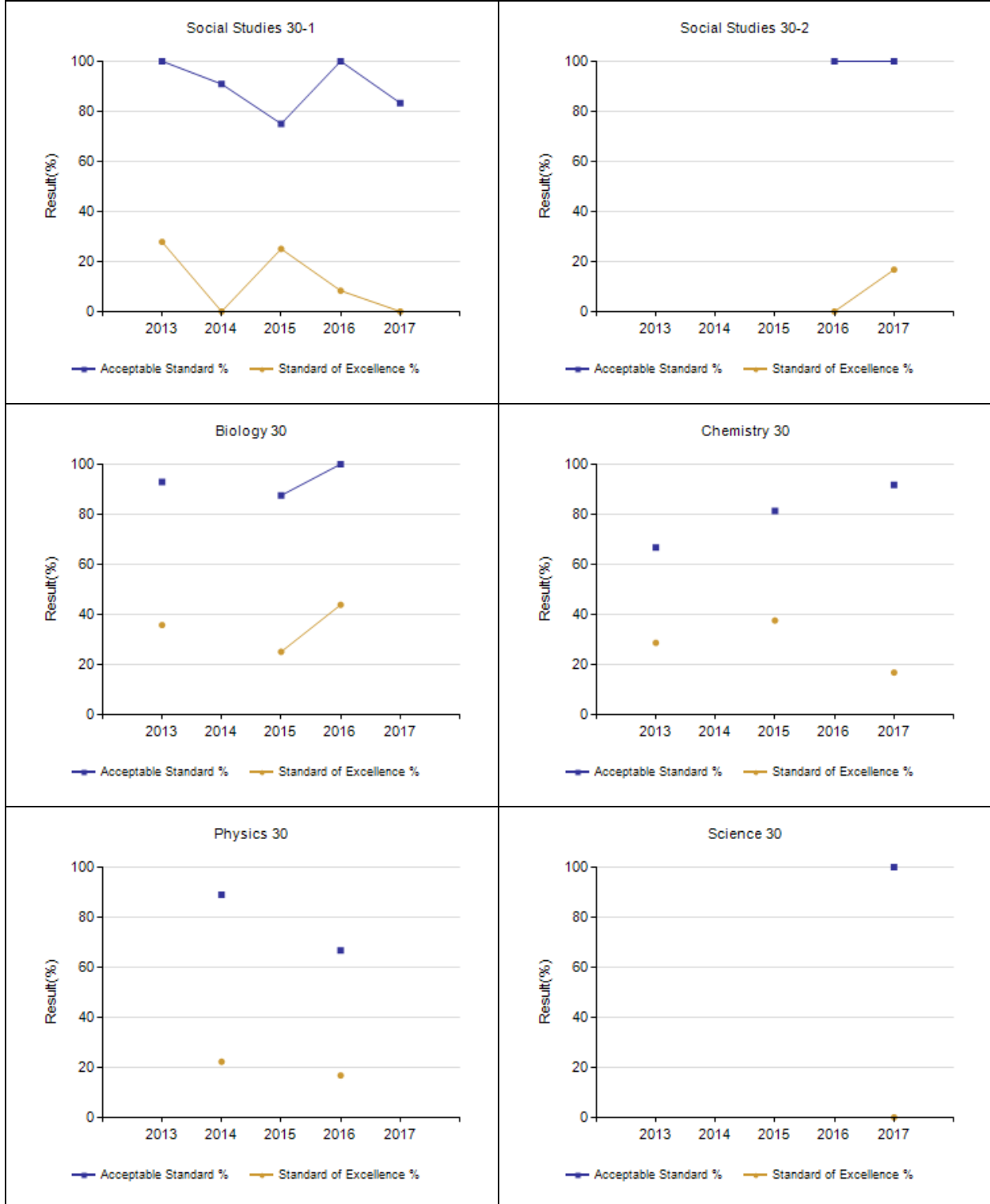
1. Results have been adjusted to reflect the change from previous data source systems to Provincial Approach to Student Information (PASI).
2. "A" = Acceptable; "E" = Excellence — the percentages achieving the acceptable standard include the percentages achieving the standard of excellence.
3. Participation in Diploma Examinations was impacted by the flooding in June 2013 and by the fires in May to June 2016. Caution should be used when interpreting trends over time for the province and those school authorities affected by these events.
4. Data values have been suppressed where the number of respondents/students is fewer than 6. Suppression is marked with an asterisk (*).



Notes:

1. Data values have been suppressed where the number of respondents/students is fewer than 6. Suppression is marked with an asterisk (*).
2. Caution should be used when interpreting evaluations and results over time for Mathematics 30-1/30-2, as equating was not in place until the 2016/17 school year. Alberta Education does not comment on province wide trends until it has five years of equated examination data.
3. Participation in Diploma Examinations was impacted by the flooding in June 2013 and by the fires in May to June 2016. Caution should be used when interpreting trends over time for the province and those school authorities affected by these events.

Diploma Examination Results by Course (optional)



Notes:

1. Data values have been suppressed where the number of respondents/students is fewer than 6. Suppression is marked with an asterisk (*).
2. Participation in Diploma Examinations was impacted by the flooding in June 2013 and by the fires in May to June 2016. Caution should be used when interpreting trends over time for the province and those school authorities affected by these events.

Diploma Examination Results Course By Course Summary With Measure Evaluation (optional)

		Living Waters Christian Academ						Alberta				
		Achievement	Improvement	Overall	2017		Prev 3 Year Average		2017		Prev 3 Year Average	
Course	Measure				N	%	N	%	N	%	N	%
English Lang Arts 30-1	Acceptable Standard	Intermediate	Declined	Issue	7	85.7	11	100.0	30,150	86.5	28,895	87.0
	Standard of Excellence	Very Low	Maintained	Concern	7	0.0	11	12.6	30,150	11.7	28,895	11.3
English Lang Arts 30-2	Acceptable Standard	*	*	*	4	*	n/a	n/a	16,797	89.5	16,361	89.2
	Standard of Excellence	*	*	*	4	*	n/a	n/a	16,797	11.4	16,361	12.2
Mathematics 30-1	Acceptable Standard	*	*	*	4	*	9	67.6	20,371	73.1	20,934	74.0
	Standard of Excellence	*	*	*	4	*	9	13.7	20,371	30.7	20,934	28.5
Mathematics 30-2	Acceptable Standard	*	*	*	5	*	6	100.0	14,327	74.7	12,738	73.6
	Standard of Excellence	*	*	*	5	*	6	16.7	14,327	15.9	12,738	15.8
Social Studies 30-1	Acceptable Standard	Intermediate	Maintained	Acceptable	6	83.3	10	88.6	22,249	86.0	21,875	85.9
	Standard of Excellence	Very Low	Maintained	Concern	6	0.0	10	11.1	22,249	14.8	21,875	14.9
Social Studies 30-2	Acceptable Standard	Very High	Maintained	Excellent	6	100.0	8	100.0	20,054	80.6	19,579	82.1
	Standard of Excellence	High	Improved	Good	6	16.7	8	0.0	20,054	12.6	19,579	13.5
Biology 30	Acceptable Standard	n/a	n/a	n/a	n/a	n/a	12	93.8	22,993	84.2	21,843	85.4
	Standard of Excellence	n/a	n/a	n/a	n/a	n/a	12	34.4	22,993	32.3	21,843	32.4
Chemistry 30	Acceptable Standard	Very High	Maintained	Excellent	12	91.7	16	81.3	18,751	83.1	19,161	81.7
	Standard of Excellence	Low	Declined	Issue	12	16.7	16	37.5	18,751	38.6	19,161	34.6
Physics 30	Acceptable Standard	*	*	*	1	*	8	77.8	9,952	85.7	10,553	84.3
	Standard of Excellence	*	*	*	1	*	8	19.4	9,952	41.8	10,553	36.6
Science 30	Acceptable Standard	Very High	n/a	n/a	6	100.0	n/a	n/a	9,323	84.9	7,914	84.4
	Standard of Excellence	Low	n/a	n/a	6	0.0	n/a	n/a	9,323	28.4	7,914	26.6

Notes:

1. Data values have been suppressed where the number of respondents/students is fewer than 6. Suppression is marked with an asterisk (*).
2. Achievement Evaluation is not calculated for courses that do not have sufficient data available, either due to too few jurisdictions offering the course or because of changes in examinations.
3. Caution should be used when interpreting evaluations and results over time for Mathematics 30-1/30-2, as equating was not in place until the 2016/17 school year. Alberta Education does not comment on province wide trends until it has five years of equated examination data.
4. Participation in Diploma Examinations was impacted by the flooding in June 2013 and by the fires in May to June 2016. Caution should be used when interpreting trends over time for the province and those school authorities affected by these events.

Measure Evaluation Reference - Achievement Evaluation

Achievement evaluation is based upon a comparison of Current Year data to a set of standards which remain consistent over time. The Standards are calculated by taking the 3 year average of baseline data for each measure across all school jurisdictions and calculating the 5th, 25th, 75th, and 95th percentiles. Once calculated, these standards remain in place from year to year to allow for consistent planning and evaluation.

The table below shows the range of values defining the 5 achievement evaluation levels for each measure.

Course	Measure	Very Low	Low	Intermediate	High	Very High
English Lang Arts 30-1	Acceptable Standard	0.00 - 81.51	81.51 - 85.05	85.05 - 90.15	90.15 - 94.10	94.10 - 100.00
	Standard of Excellence	0.00 - 2.28	2.28 - 6.43	6.43 - 11.18	11.18 - 15.71	15.71 - 100.00
English Lang Arts 30-2	Acceptable Standard	0.00 - 81.90	81.90 - 88.81	88.81 - 94.35	94.35 - 97.10	97.10 - 100.00
	Standard of Excellence	0.00 - 3.70	3.70 - 8.52	8.52 - 14.55	14.55 - 18.92	18.92 - 100.00
French Lang Arts 30-1	Acceptable Standard	0.00 - 78.73	78.73 - 92.86	92.86 - 100.00	100.00 - 100.00	100.00 - 100.00
	Standard of Excellence	0.00 - 0.00	0.00 - 5.21	5.21 - 16.67	16.67 - 23.04	23.04 - 100.00
Social Studies 30-1	Acceptable Standard	0.00 - 69.65	69.65 - 80.38	80.38 - 87.98	87.98 - 95.79	95.79 - 100.00
	Standard of Excellence	0.00 - 2.27	2.27 - 8.63	8.63 - 14.51	14.51 - 19.76	19.76 - 100.00
Social Studies 30-2	Acceptable Standard	0.00 - 71.97	71.97 - 79.85	79.85 - 87.56	87.56 - 91.42	91.42 - 100.00
	Standard of Excellence	0.00 - 3.94	3.94 - 8.65	8.65 - 14.07	14.07 - 23.34	23.34 - 100.00
Biology 30	Acceptable Standard	0.00 - 68.26	68.26 - 79.41	79.41 - 85.59	85.59 - 92.33	92.33 - 100.00
	Standard of Excellence	0.00 - 10.75	10.75 - 21.84	21.84 - 29.26	29.26 - 33.42	33.42 - 100.00
Chemistry 30	Acceptable Standard	0.00 - 58.10	58.10 - 69.51	69.51 - 80.34	80.34 - 84.74	84.74 - 100.00
	Standard of Excellence	0.00 - 11.22	11.22 - 20.47	20.47 - 30.47	30.47 - 35.07	35.07 - 100.00
Physics 30	Acceptable Standard	0.00 - 50.06	50.06 - 71.77	71.77 - 83.00	83.00 - 88.67	88.67 - 100.00
	Standard of Excellence	0.00 - 5.61	5.61 - 18.10	18.10 - 31.88	31.88 - 41.10	41.10 - 100.00
Science 30	Acceptable Standard	0.00 - 64.19	64.19 - 77.66	77.66 - 86.33	86.33 - 98.50	98.50 - 100.00
	Standard of Excellence	0.00 - 0.00	0.00 - 14.69	14.69 - 25.03	25.03 - 38.93	38.93 - 100.00

Notes:

- The range of values at each evaluation level is interpreted as greater than or equal to the lower value, and less than the higher value. For the Very High evaluation level, values range from greater than or equal to the lower value to 100%.
- Achievement Evaluation is not calculated for courses that do not have sufficient data available, either due to too few jurisdictions offering the course or because of changes in examinations.

Improvement Table

For each jurisdiction, improvement evaluation consists of comparing the Current Year result for each measure with the previous three-year average. A chi-square statistical test is used to determine the significance of the improvement. This test takes into account the size of the jurisdiction in the calculation to make improvement evaluation fair across jurisdictions of different sizes.

The table below shows the definition of the 5 improvement evaluation levels based upon the chi-square result.

Evaluation Category	Chi-Square Range
Declined Significantly	3.84 + (current < previous 3-year average)
Declined	1.00 - 3.83 (current < previous 3-year average)
Maintained	less than 1.00
Improved	1.00 - 3.83 (current > previous 3-year average)
Improved Significantly	3.84 + (current > previous 3-year average)

Overall Evaluation Table

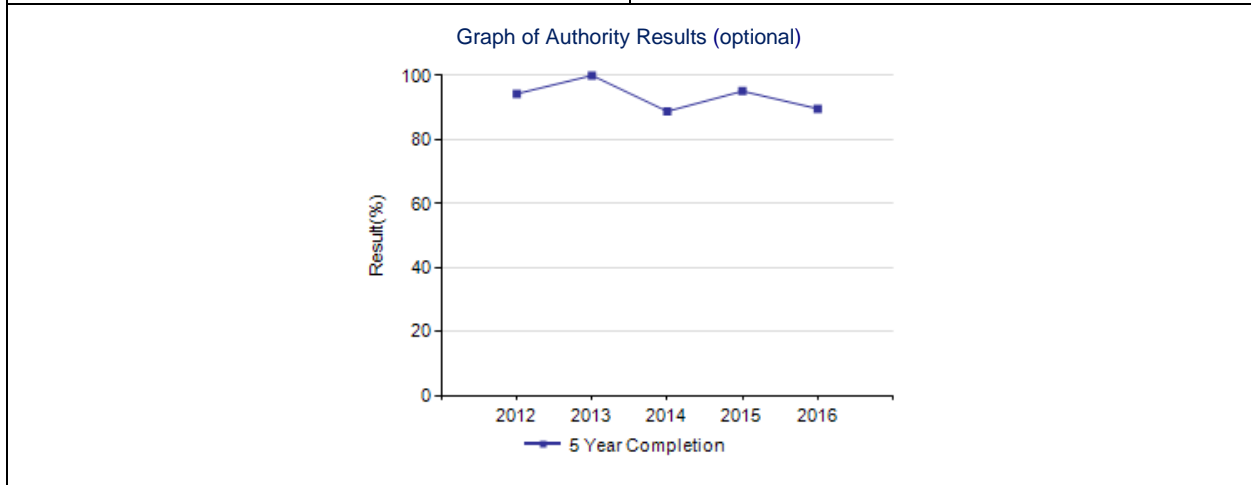
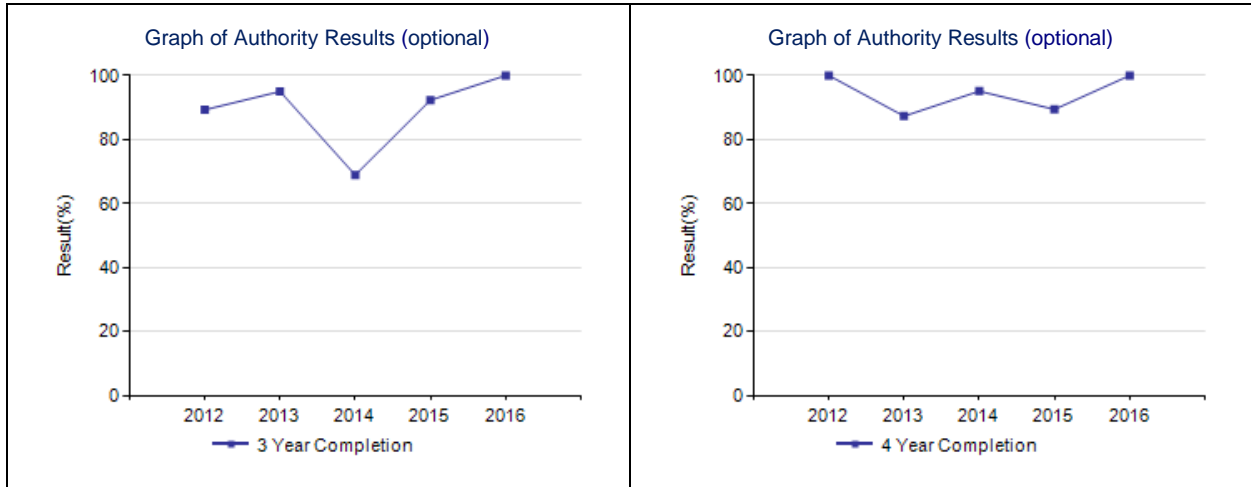
The overall evaluation combines the Achievement Evaluation and the Improvement Evaluation. The table below illustrates how the Achievement and Improvement evaluations are combined to get the overall evaluation.

	Achievement				
	Very High	High	Intermediate	Low	Very Low
Improved Significantly	Excellent	Good	Good	Good	Acceptable
Improved	Excellent	Good	Good	Acceptable	Issue
Maintained	Excellent	Good	Acceptable	Issue	Concern
Declined	Good	Acceptable	Issue	Issue	Concern
Declined Significantly	Acceptable	Issue	Issue	Concern	Concern

High School Completion Rate – Measure Details (OPTIONAL)

High School Completion Rate - percentages of students who completed high school within three, four and five years of entering Grade 10.

	LWCA					Province				
	2012	2013	2014	2015	2016	2012	2013	2014	2015	2016
3 Year Completion	89.3	95.0	68.9	92.3	100.0	74.8	75.3	76.5	76.5	77.9
4 Year Completion	100.0	87.3	95.1	89.4	100.0	79.2	79.6	79.9	81.0	81.2
5 Year Completion	94.3	100.0	88.8	95.1	89.6	80.6	81.5	82.0	82.1	83.2

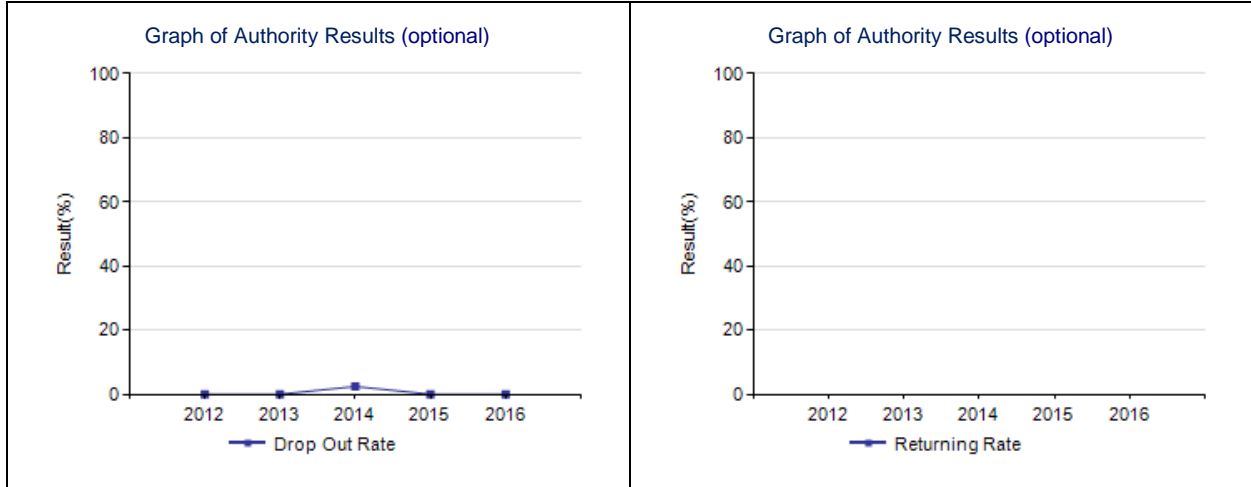


Notes:

1. Data values have been suppressed where the number of respondents/students is fewer than 6. Suppression is marked with an asterisk (*).
2. Weighting of school-awarded marks in diploma courses increased from 50% to 70% in the 2015/2016 school year. Caution should be used when interpreting trends over time.

Drop Out Rate – Measure Details (OPTIONAL)

Drop Out Rate - annual dropout rate of students aged 14 to 18										
	LWCA					Province				
	2012	2013	2014	2015	2016	2012	2013	2014	2015	2016
Drop Out Rate	0.0	0.0	2.4	0.0	0.0	3.6	3.3	3.5	3.2	3.0
Returning Rate	*	n/a	n/a	*	n/a	22.8	20.7	20.9	18.2	18.9

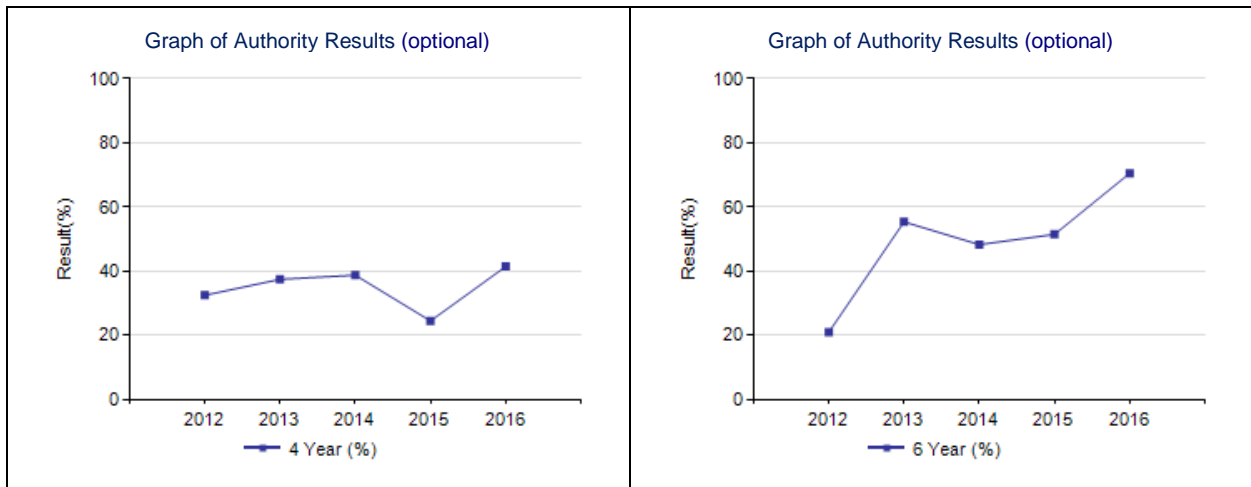


Notes:

1. Data values have been suppressed where the number of respondents/students is fewer than 6. Suppression is marked with an asterisk (*).

High School to Post-secondary Transition Rate – Measure Details (OPTIONAL)

High school to post-secondary transition rate of students within four and six years of entering Grade 10.										
	LWCA					Province				
	2012	2013	2014	2015	2016	2012	2013	2014	2015	2016
4 Year Rate	32.4	37.4	38.7	24.4	41.4	39.4	39.7	38.3	37.0	37.0
6 Year Rate	20.9	55.3	48.2	51.4	70.5	59.3	59.0	59.7	59.4	57.9



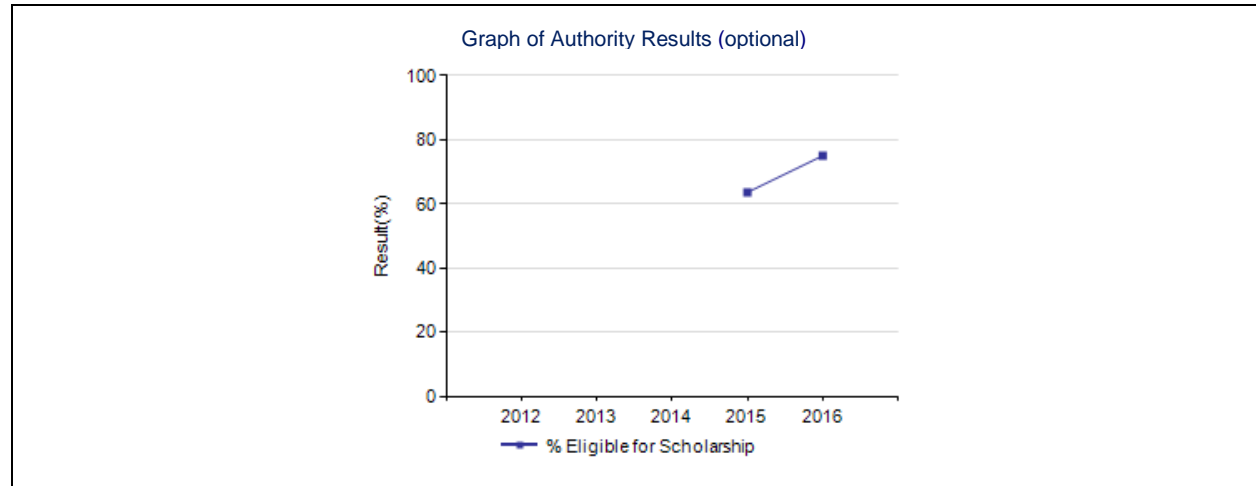
Notes:

1. Data values have been suppressed where the number of respondents/students is fewer than 6. Suppression is marked with an asterisk (*).

Rutherford Eligibility Rate – Measure Details (OPTIONAL)

Percentage of Grade 12 students eligible for a Rutherford Scholarship.										
	LWCA					Province				
	2012	2013	2014	2015	2016	2012	2013	2014	2015	2016
Rutherford Scholarship Eligibility Rate	n/a	n/a	n/a	63.6	75.0	n/a	n/a	n/a	60.8	62.3

Rutherford eligibility rate details.									
Reporting School Year	Total Students	Grade 10 Rutherford		Grade 11 Rutherford		Grade 12 Rutherford		Overall	
		Number of Students Eligible	Percent of Students Eligible	Number of Students Eligible	Percent of Students Eligible	Number of Students Eligible	Percent of Students Eligible	Number of Students Eligible	Percent of Students Eligible
2012	n/a	n/a	n/a	n/a	n/a	n/a	n/a	n/a	n/a
2013	n/a	n/a	n/a	n/a	n/a	n/a	n/a	n/a	n/a
2014	n/a	n/a	n/a	n/a	n/a	n/a	n/a	n/a	n/a
2015	11	7	63.6	7	63.6	5	45.5	7	63.6
2016	20	12	60.0	14	70.0	12	60.0	15	75.0



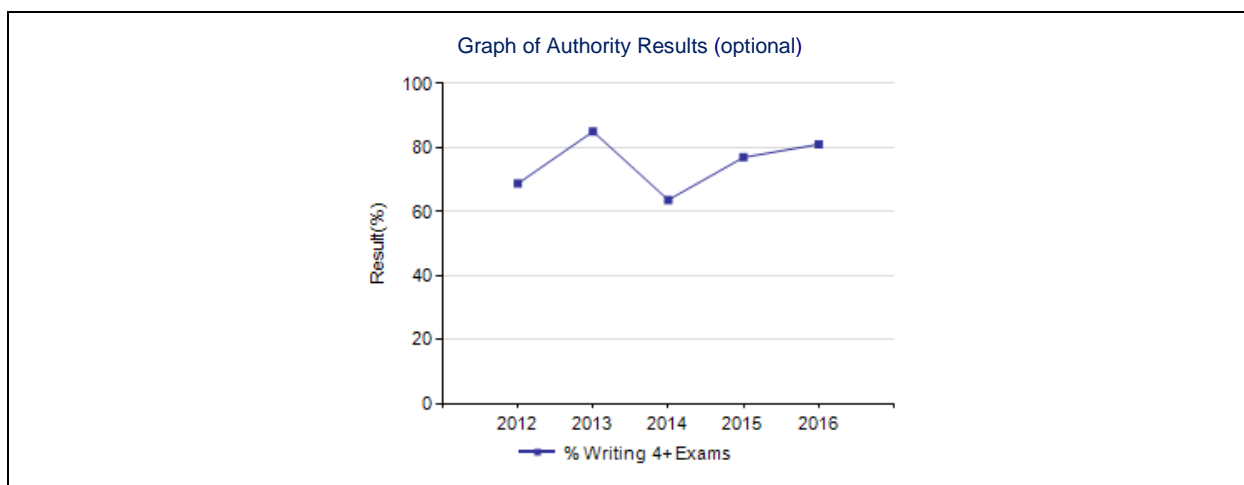
Notes:

1. Data values have been suppressed where the number of respondents/students is fewer than 6. Suppression is marked with an asterisk (*).
2. Weighting of school-awarded marks in diploma courses increased from 50% to 70% in the 2015/2016 school year. Caution should be used when interpreting trends over time.
3. Due to the change from previous data source systems to Provincial Approach to Student Information (PASI), historical Rutherford Scholarship Eligibility Rate results are not available.

Diploma Examination Participation Rate – Measure Details (OPTIONAL)

Diploma examination participation rate: Percentage of students writing 0 to 6 or more Diploma Examinations by the end of their 3rd year of high school.

	LWCA					Province				
	2012	2013	2014	2015	2016	2012	2013	2014	2015	2016
% Writing 0 Exams	0.0	0.0	4.5	0.0	0.0	16.5	16.6	15.7	15.7	15.0
% Writing 1+ Exams	100.0	100.0	95.5	100.0	100.0	83.5	83.4	84.3	84.3	85.0
% Writing 2+ Exams	100.0	95.0	95.5	100.0	100.0	80.5	80.3	81.4	81.2	81.9
% Writing 3+ Exams	96.2	95.0	84.9	92.3	90.5	66.8	63.3	65.0	64.7	65.2
% Writing 4+ Exams	68.7	85.0	63.6	76.9	81.0	55.9	50.1	54.4	54.6	54.9
% Writing 5+ Exams	55.0	60.0	42.4	46.2	52.4	37.5	31.5	36.3	37.1	37.5
% Writing 6+ Exams	6.9	5.0	5.3	15.4	9.5	14.3	11.4	13.1	13.8	13.6



Percentage of students writing 1 or more Diploma Examinations by the end of their 3rd year of high school, by course and subject.

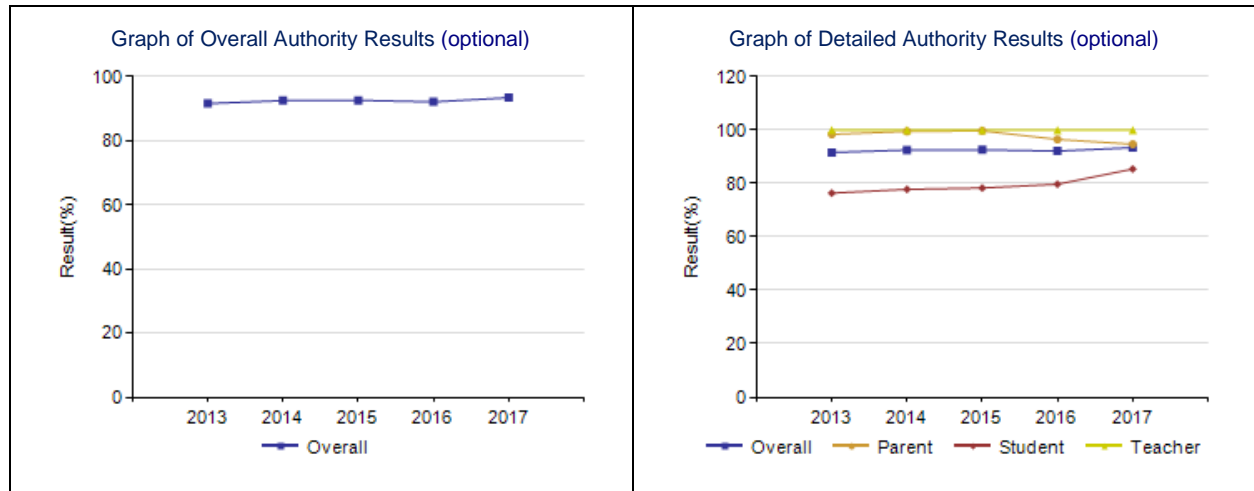
	LWCA					Province				
	2012	2013	2014	2015	2016	2012	2013	2014	2015	2016
English Language Arts 30-1	86.7	100.0	78.9	84.6	76.2	54.7	53.9	54.0	53.2	53.9
English Language Arts 30-2	13.3	0.0	10.5	15.4	23.8	25.9	27.1	28.0	28.7	28.7
Total of 1 or more English Diploma Exams	100.0	100.0	89.5	100.0	100.0	78.6	78.7	79.7	79.5	80.0
Social Studies 30-1	93.3	80.0	68.4	61.5	61.9	47.6	45.8	45.1	43.5	45.1
Social Studies 30-2	6.7	15.0	15.8	38.5	38.1	31.9	33.7	35.2	36.7	35.8
Total of 1 or more Social Diploma Exams	100.0	95.0	84.2	100.0	100.0	78.7	78.8	79.6	79.5	80.2
Pure Mathematics 30	53.3	0.0	0.0	0.0	0.0	42.2	7.2	0.1	0.0	0.0
Applied Mathematics 30	46.7	0.0	0.0	0.0	0.0	19.5	0.2	0.0	0.0	0.0
Mathematics 30-1	n/a	60.0	47.4	53.8	52.4	n/a	29.7	37.3	37.1	36.4
Mathematics 30-2	n/a	35.0	15.8	30.8	28.6	n/a	16.7	21.4	22.4	23.6
Total of 1 or more Math Diploma Exams	93.3	90.0	63.2	84.6	81.0	61.1	52.1	57.0	57.6	58.3
Biology 30	40.0	75.0	57.9	69.2	61.9	42.8	42.2	41.4	40.6	40.7
Chemistry 30	46.7	45.0	47.4	46.2	57.1	36.5	31.5	34.7	35.7	35.5
Physics 30	26.7	25.0	36.8	30.8	28.6	20.2	17.3	20.0	19.9	19.3
Science 30	13.3	10.0	5.3	0.0	4.8	10.3	9.8	12.8	14.1	15.7
Total of 1 or more Science Diploma Exams	66.7	90.0	89.5	76.9	90.5	59.2	57.3	59.4	59.8	60.5

Notes:

1. Data values have been suppressed where the number of respondents/students is fewer than 6. Suppression is marked with an asterisk (*).
2. Participation in Diploma Examinations was impacted by the flooding in June 2013 and by the fires in May to June 2016. Caution should be used when interpreting trends over time for the province and those school authorities affected by these events.
3. Weighting of school-awarded marks in diploma courses increased from 50% to 70% in the 2015/2016 school year. Caution should be used when interpreting trends over time.

Citizenship – Measure Details (OPTIONAL)

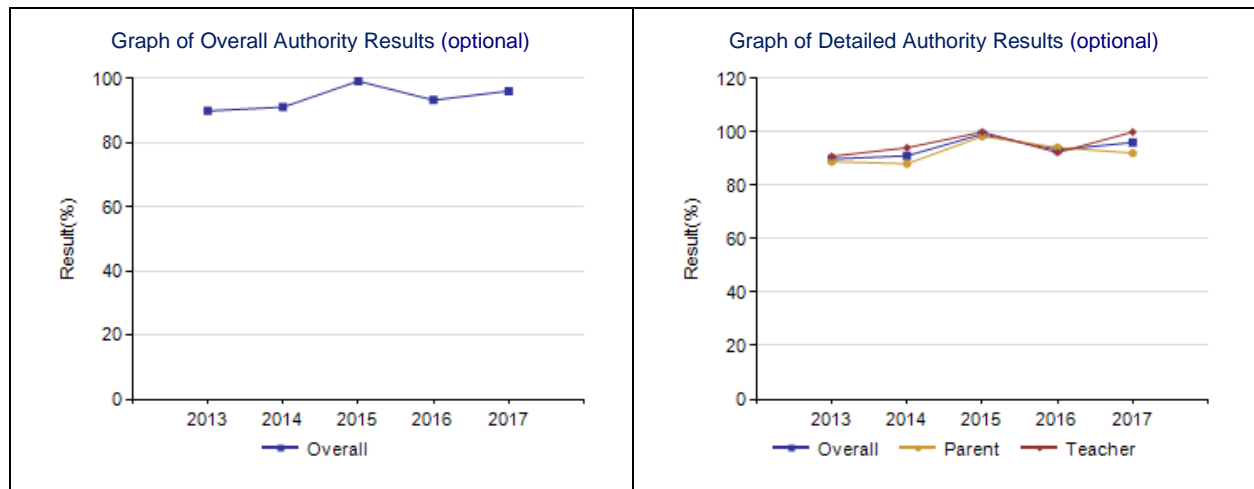
Percentage of teachers, parents and students who are satisfied that students model the characteristics of active citizenship.										
	LWCA					Province				
	2013	2014	2015	2016	2017	2013	2014	2015	2016	2017
Overall	91.6	92.5	92.6	92.1	93.4	83.4	83.4	83.5	83.9	83.7
Teacher	100.0	100.0	100.0	100.0	100.0	93.6	93.8	94.2	94.5	94.0
Parent	98.4	99.5	99.7	96.5	94.7	80.3	81.9	82.1	82.9	82.7
Student	76.4	77.8	78.3	79.7	85.4	76.2	74.5	74.2	74.5	74.4



Notes:
 1. Data values have been suppressed where the number of respondents/students is fewer than 6. Suppression is marked with an asterisk (*).

Work Preparation – Measure Details (OPTIONAL)

Percentage of teachers and parents who agree that students are taught attitudes and behaviours that will make them successful at work when they finish school.										
	LWCA					Province				
	2013	2014	2015	2016	2017	2013	2014	2015	2016	2017
Overall	89.9	91.1	99.2	93.3	96.1	80.3	81.2	82.0	82.6	82.7
Teacher	90.9	94.1	100.0	92.3	100.0	89.4	89.3	89.7	90.5	90.4
Parent	88.9	88.1	98.4	94.2	92.1	71.1	73.1	74.2	74.8	75.1

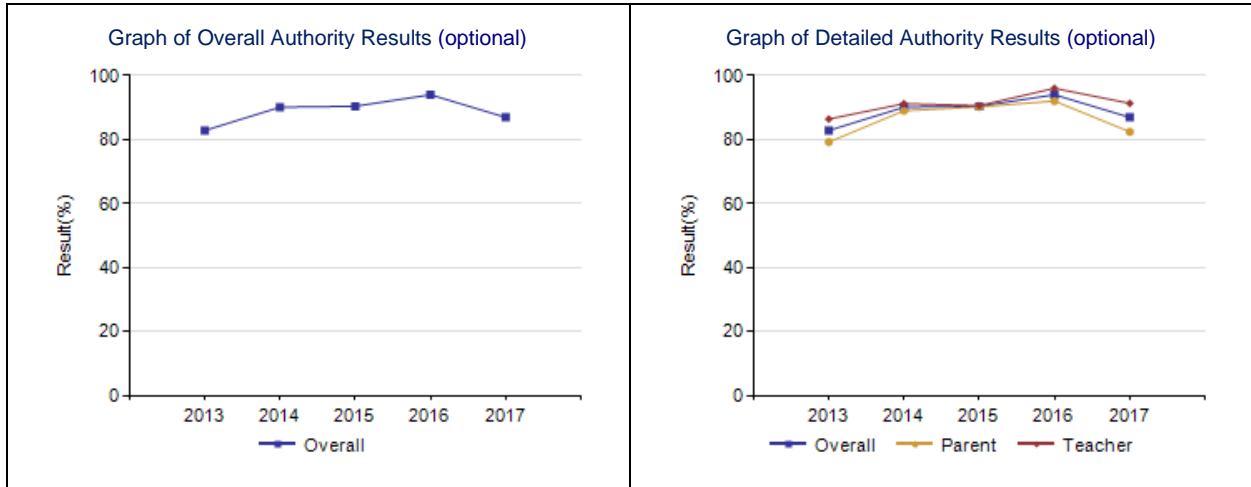


Notes:
 1. Data values have been suppressed where the number of respondents/students is fewer than 6. Suppression is marked with an asterisk (*).

Lifelong Learning – Measure Details (OPTIONAL)

Percentage of teacher and parent satisfaction that students demonstrate the knowledge, skills and attitudes necessary for lifelong learning.

	LWCA					Province				
	2013	2014	2015	2016	2017	2013	2014	2015	2016	2017
Overall	82.8	90.1	90.4	94.0	86.9	68.5	69.5	70.0	70.7	71.0
Teacher	86.4	91.2	90.6	96.0	91.3	75.7	76.0	76.0	77.3	77.3
Parent	79.2	89.0	90.2	92.0	82.4	61.2	63.0	64.0	64.2	64.8



Notes:

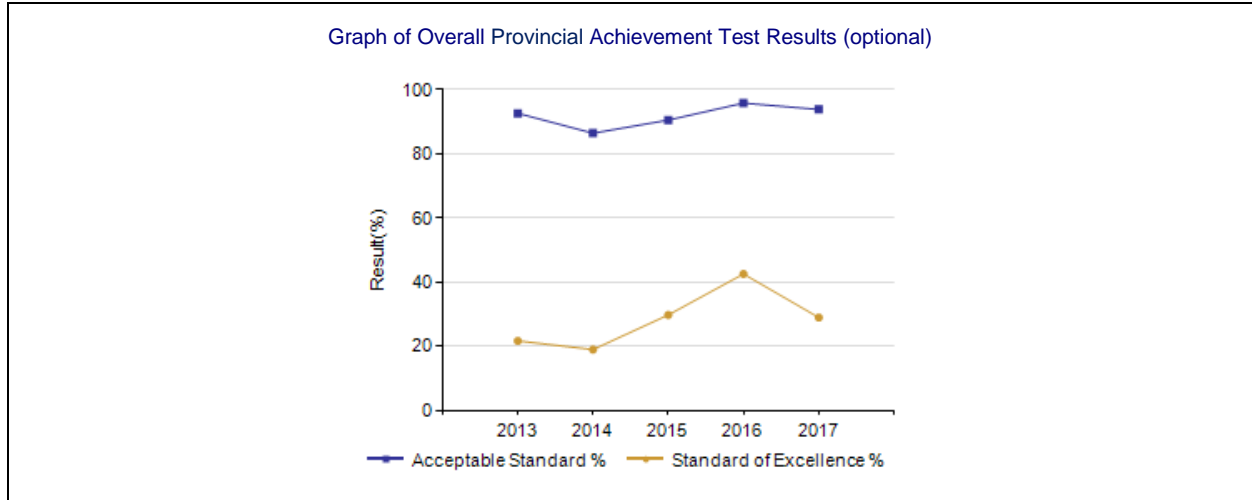
1. Data values have been suppressed where the number of respondents/students is fewer than 6. Suppression is marked with an asterisk (*).

Provincial Achievement Test Results – Measure Details (OPTIONAL)

PAT Course by Course Results by Number Enrolled.													
		Results (in percentages)										Target	
		2013		2014		2015		2016		2017		2017	
		A	E	A	E	A	E	A	E	A	E	A	E
English Language Arts 6	LWCA	100.0	15.4	94.1	17.6	100.0	37.5	95.2	33.3	100.0	43.8		
	Province	82.5	16.3	81.9	17.6	82.8	19.5	82.9	20.4	82.5	18.9		
Mathematics 6	LWCA	100.0	15.4	82.4	17.6	93.8	25.0	90.5	19.0	93.8	12.5		
	Province	73.0	16.4	73.5	15.4	73.2	14.1	72.2	14.0	69.4	12.6		
Science 6	LWCA	100.0	46.2	88.2	35.3	100.0	75.0	95.2	61.9	100.0	50.0		
	Province	77.5	25.9	75.9	24.9	76.3	25.3	78.0	27.1	76.9	29.0		
Social Studies 6	LWCA	100.0	38.5	82.4	11.8	87.5	37.5	95.2	52.4	100.0	18.8		
	Province	72.7	19.0	70.4	16.6	69.8	18.1	71.4	22.0	72.9	21.7		
English Language Arts 9	LWCA	91.7	8.3	93.8	18.8	90.5	9.5	100.0	22.2	100.0	18.8		
	Province	76.7	14.8	76.3	15.0	75.6	14.4	77.0	15.2	76.8	14.9		
Mathematics 9	LWCA	83.3	12.5	75.0	18.8	81.0	23.8	100.0	44.4	75.0	25.0		
	Province	66.8	18.3	67.1	17.3	65.3	17.9	67.8	17.5	67.2	19.0		
Science 9	LWCA	91.7	29.2	93.8	12.5	81.0	14.3	100.0	66.7	87.5	25.0		
	Province	72.9	20.0	73.2	22.1	74.1	22.8	74.2	22.4	74.0	21.4		
Social Studies 9	LWCA	87.5	20.8	81.3	18.8	95.2	28.6	100.0	44.4	93.8	37.5		
	Province	65.5	18.8	65.5	19.9	65.1	19.8	64.7	18.0	67.0	20.2		

Notes:

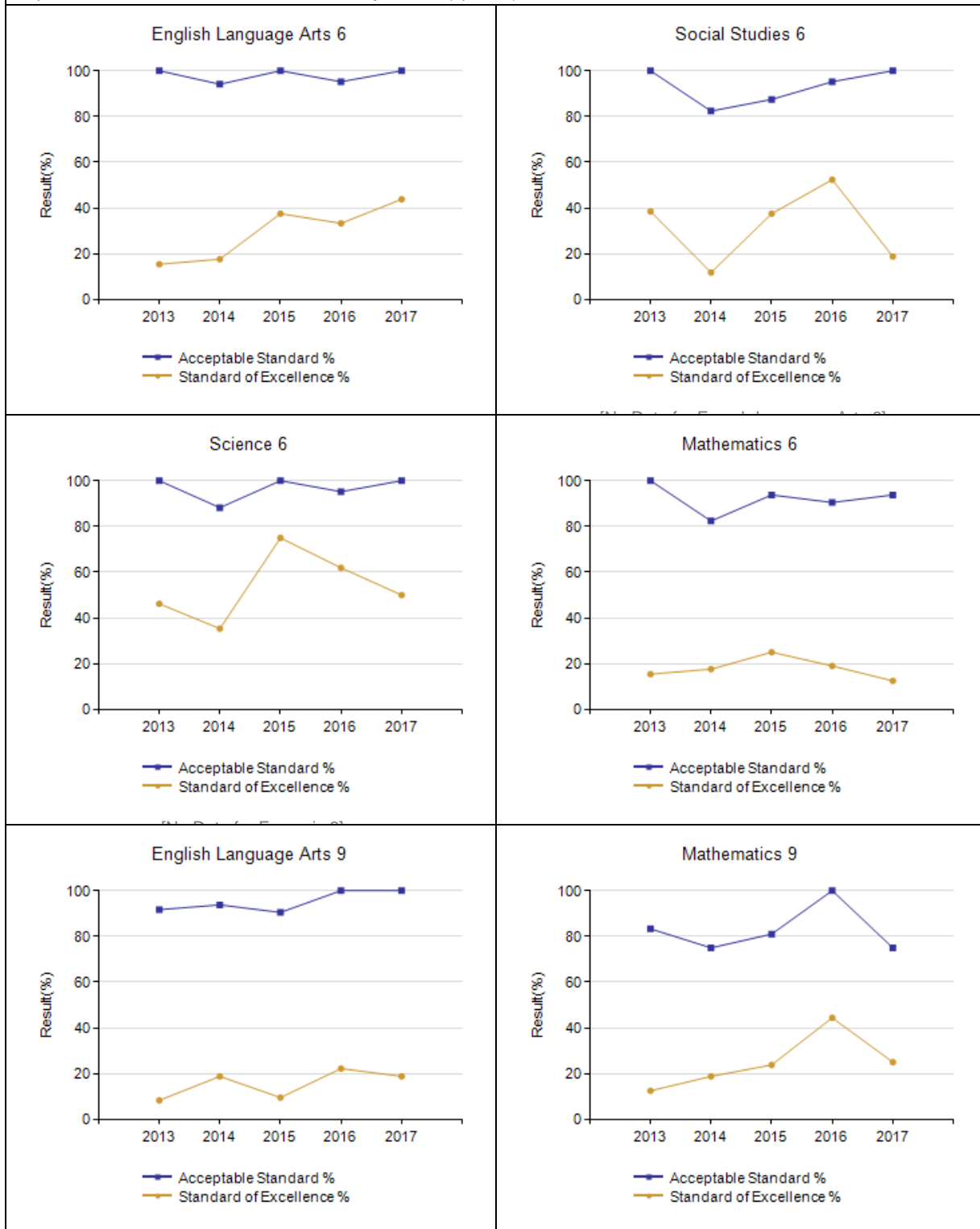
1. Data values have been suppressed where the number of respondents/students is fewer than 6. Suppression is marked with an asterisk (*).
2. "A" = Acceptable; "E" = Excellence — the percentages achieving the acceptable standard include the percentages achieving the standard of excellence.
3. Participation in Provincial Achievement Tests was impacted by the flooding in June 2013 (Grade 9 only) and by the fires in May to June 2016. Caution should be used when interpreting trends over time for the province and those school authorities affected by these events.



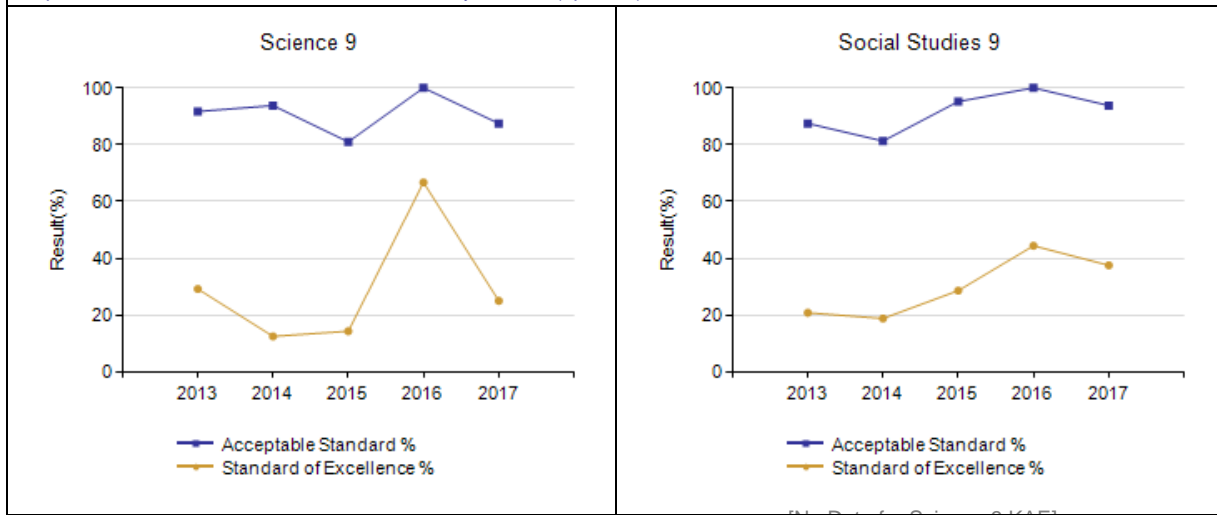
Notes:

1. Data values have been suppressed where the number of respondents/students is fewer than 6. Suppression is marked with an asterisk (*).
2. Participation in Provincial Achievement Tests was impacted by the flooding in June 2013 (Grade 9 only) and by the fires in May to June 2016. Caution should be used when interpreting trends over time for the province and those school authorities affected by these events.

Graph of Provincial Achievement Test Results by Course (optional)



Graph of Provincial Achievement Test Results by Course (optional)



PAT Results Course By Course Summary By Enrolled With Measure Evaluation (optional)

		Living Waters Christian Academ						Alberta				
		Achievement	Improvement	Overall	2017		Prev 3 Year Average		2017		Prev 3 Year Average	
Course	Measure				N	%	N	%	N	%	N	%
English Language Arts 6	Acceptable Standard	Very High	Maintained	Excellent	16	100.0	18	96.5	49,572	82.5	46,989	82.5
	Standard of Excellence	Very High	Maintained	Excellent	16	43.8	18	29.5	49,572	18.9	46,989	19.2
Mathematics 6	Acceptable Standard	Very High	Maintained	Excellent	16	93.8	18	88.9	49,507	69.4	46,906	73.0
	Standard of Excellence	Intermediate	Maintained	Acceptable	16	12.5	18	20.6	49,507	12.6	46,906	14.5
Science 6	Acceptable Standard	Very High	Maintained	Excellent	16	100.0	18	94.5	49,501	76.9	46,914	76.7
	Standard of Excellence	Very High	Maintained	Excellent	16	50.0	18	57.4	49,501	29.0	46,914	25.8
Social Studies 6	Acceptable Standard	Very High	Improved	Excellent	16	100.0	18	88.4	49,485	72.9	46,903	70.5
	Standard of Excellence	Intermediate	Maintained	Acceptable	16	18.8	18	33.9	49,485	21.7	46,903	18.9
English Language Arts 9	Acceptable Standard	Very High	Maintained	Excellent	16	100.0	15	94.7	45,487	76.8	43,746	76.3
	Standard of Excellence	High	Maintained	Good	16	18.8	15	16.8	45,487	14.9	43,746	14.9
Mathematics 9	Acceptable Standard	High	Maintained	Good	16	75.0	15	85.3	45,020	67.2	43,295	66.7
	Standard of Excellence	Very High	Maintained	Excellent	16	25.0	15	29.0	45,020	19.0	43,295	17.6
Science 9	Acceptable Standard	Very High	Maintained	Excellent	16	87.5	15	91.6	45,445	74.0	43,808	73.8
	Standard of Excellence	Very High	Maintained	Excellent	16	25.0	15	31.2	45,445	21.4	43,808	22.4
Social Studies 9	Acceptable Standard	Very High	Maintained	Excellent	16	93.8	15	92.2	45,484	67.0	43,722	65.1
	Standard of Excellence	Very High	Maintained	Excellent	16	37.5	15	30.6	45,484	20.2	43,722	19.2

Notes:

1. Data values have been suppressed where the number of respondents/students is fewer than 6. Suppression is marked with an asterisk (*).
2. Achievement Evaluation is not calculated for courses that do not have sufficient data available, either due to too few jurisdictions offering the course or because of changes in tests.
3. Participation in Provincial Achievement Tests was impacted by the flooding in June 2013 (Grade 9 only) and by the fires in May to June 2016. Caution should be used when interpreting trends over time for the province and those school authorities affected by these events.

Measure Evaluation Reference - Achievement Evaluation

Achievement evaluation is based upon a comparison of Current Year data to a set of standards which remain consistent over time. The Standards are calculated by taking the 3 year average of baseline data for each measure across all school jurisdictions and calculating the 5th, 25th, 75th, and 95th percentiles. Once calculated, these standards remain in place from year to year to allow for consistent planning and evaluation.

The table below shows the range of values defining the 5 achievement evaluation levels for each measure.

Course	Measure	Very Low	Low	Intermediate	High	Very High
English Language Arts 6	Acceptable Standard	0.00 - 67.95	67.95 - 78.40	78.40 - 86.09	86.09 - 91.37	91.37 - 100.00
	Standard of Excellence	0.00 - 6.83	6.83 - 11.65	11.65 - 17.36	17.36 - 22.46	22.46 - 100.00
Mathematics 6	Acceptable Standard	0.00 - 63.91	63.91 - 70.73	70.73 - 79.61	79.61 - 88.67	88.67 - 100.00
	Standard of Excellence	0.00 - 8.53	8.53 - 11.31	11.31 - 18.13	18.13 - 25.17	25.17 - 100.00
Science 6	Acceptable Standard	0.00 - 60.36	60.36 - 78.51	78.51 - 86.46	86.46 - 90.64	90.64 - 100.00
	Standard of Excellence	0.00 - 11.74	11.74 - 17.42	17.42 - 25.34	25.34 - 34.31	34.31 - 100.00
Social Studies 6	Acceptable Standard	0.00 - 58.97	58.97 - 68.15	68.15 - 76.62	76.62 - 83.55	83.55 - 100.00
	Standard of Excellence	0.00 - 7.30	7.30 - 12.45	12.45 - 19.08	19.08 - 30.09	30.09 - 100.00
English Language Arts 9	Acceptable Standard	0.00 - 63.55	63.55 - 75.66	75.66 - 83.70	83.70 - 90.27	90.27 - 100.00
	Standard of Excellence	0.00 - 5.96	5.96 - 9.43	9.43 - 14.72	14.72 - 20.46	20.46 - 100.00
Mathematics 9	Acceptable Standard	0.00 - 52.42	52.42 - 60.73	60.73 - 73.88	73.88 - 78.00	78.00 - 100.00
	Standard of Excellence	0.00 - 8.18	8.18 - 12.49	12.49 - 18.10	18.10 - 24.07	24.07 - 100.00
Science 9	Acceptable Standard	0.00 - 50.57	50.57 - 60.14	60.14 - 72.50	72.50 - 76.89	76.89 - 100.00
	Standard of Excellence	0.00 - 3.39	3.39 - 6.71	6.71 - 11.81	11.81 - 15.85	15.85 - 100.00
Social Studies 9	Acceptable Standard	0.00 - 56.26	56.26 - 62.27	62.27 - 74.04	74.04 - 79.85	79.85 - 100.00
	Standard of Excellence	0.00 - 10.03	10.03 - 12.78	12.78 - 19.76	19.76 - 24.03	24.03 - 100.00

Notes:

- The range of values at each evaluation level is interpreted as greater than or equal to the lower value, and less than the higher value. For the Very High evaluation level, values range from greater than or equal to the lower value to 100%.
- Participation in Provincial Achievement Tests was impacted by the flooding in June 2013 (Grade 9 only) and by the fires in May to June 2016. Caution should be used when interpreting trends over time for the province and those school authorities affected by these events.
- Achievement Evaluation is not calculated for courses that do not have sufficient data available, either due to too few jurisdictions offering the course or because of changes in tests.

Improvement Table

For each jurisdiction, improvement evaluation consists of comparing the Current Year result for each measure with the previous three-year average. A chi-square statistical test is used to determine the significance of the improvement. This test takes into account the size of the jurisdiction in the calculation to make improvement evaluation fair across jurisdictions of different sizes.

The table below shows the definition of the 5 improvement evaluation levels based upon the chi-square result.

Evaluation Category	Chi-Square Range
Declined Significantly	3.84 + (current < previous 3-year average)
Declined	1.00 - 3.83 (current < previous 3-year average)
Maintained	less than 1.00
Improved	1.00 - 3.83 (current > previous 3-year average)
Improved Significantly	3.84 + (current > previous 3-year average)

Overall Evaluation Table

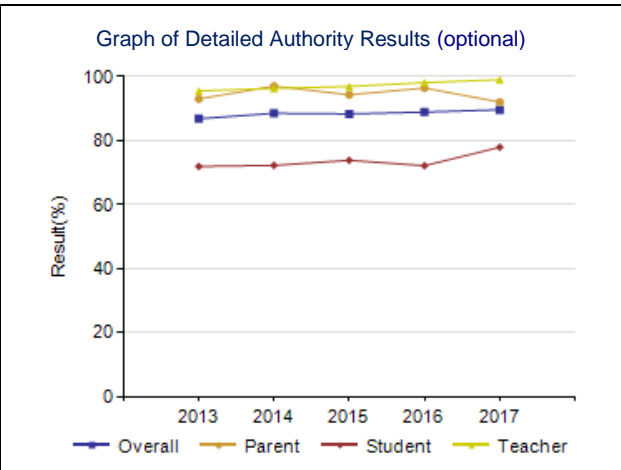
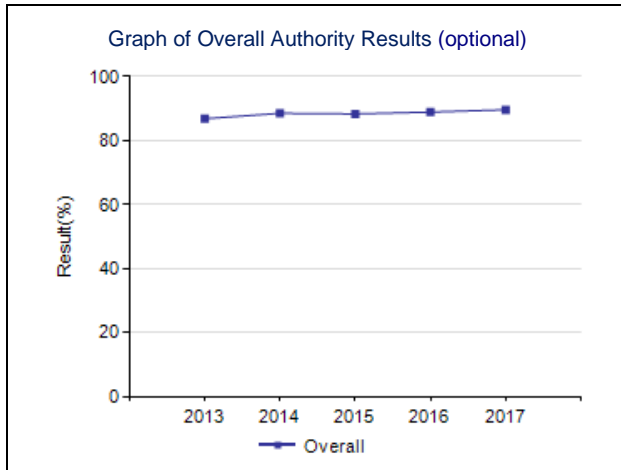
The overall evaluation combines the Achievement Evaluation and the Improvement Evaluation. The table below illustrates how the Achievement and Improvement evaluations are combined to get the overall evaluation.

	Achievement				
	Very High	High	Intermediate	Low	Very Low
Improved Significantly	Excellent	Good	Good	Good	Acceptable
Improved	Excellent	Good	Good	Acceptable	Issue
Maintained	Excellent	Good	Acceptable	Issue	Concern
Declined	Good	Acceptable	Issue	Issue	Concern
Declined Significantly	Acceptable	Issue	Issue	Concern	Concern

Program of Studies – Measure Details (OPTIONAL)

Percentage of teachers, parents and students satisfied with the opportunity for students to receive a broad program of studies including fine arts, career, technology, and health and physical education.

	LWCA					Province				
	2013	2014	2015	2016	2017	2013	2014	2015	2016	2017
Overall	86.8	88.5	88.3	88.9	89.6	81.5	81.3	81.3	81.9	81.9
Teacher	95.5	96.3	96.9	98.1	99.0	87.9	87.5	87.2	88.1	88.0
Parent	93.0	97.0	94.3	96.4	92.0	78.9	79.9	79.9	80.1	80.1
Student	71.9	72.2	73.8	72.1	77.9	77.8	76.6	76.9	77.5	77.7



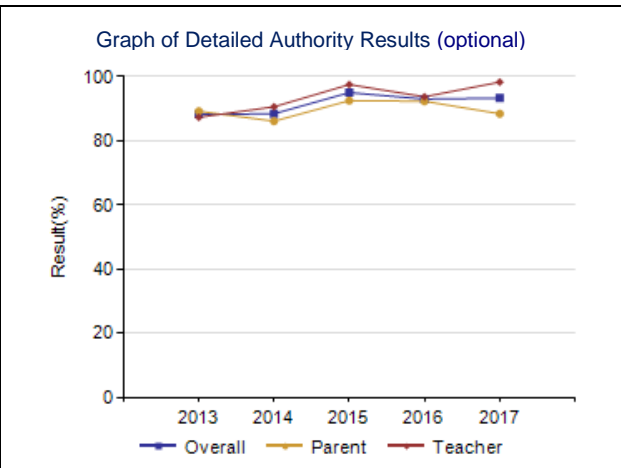
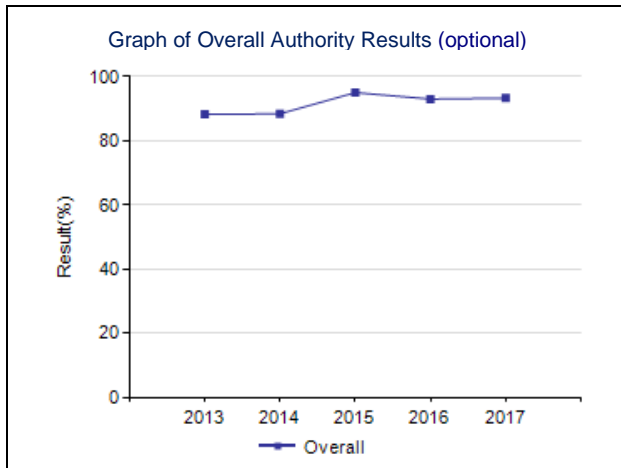
Notes:

1. Data values have been suppressed where the number of respondents/students is fewer than 6. Suppression is marked with an asterisk (*).

Parental Involvement – Measure Details (OPTIONAL)

Percentage of teachers and parents satisfied with parental involvement in decisions about their child's education.

	LWCA					Province				
	2013	2014	2015	2016	2017	2013	2014	2015	2016	2017
Overall	88.2	88.4	95.0	93.0	93.3	80.3	80.6	80.7	80.9	81.2
Teacher	87.3	90.6	97.5	93.7	98.3	88.5	88.0	88.1	88.4	88.5
Parent	89.2	86.1	92.5	92.3	88.4	72.2	73.1	73.4	73.5	73.9

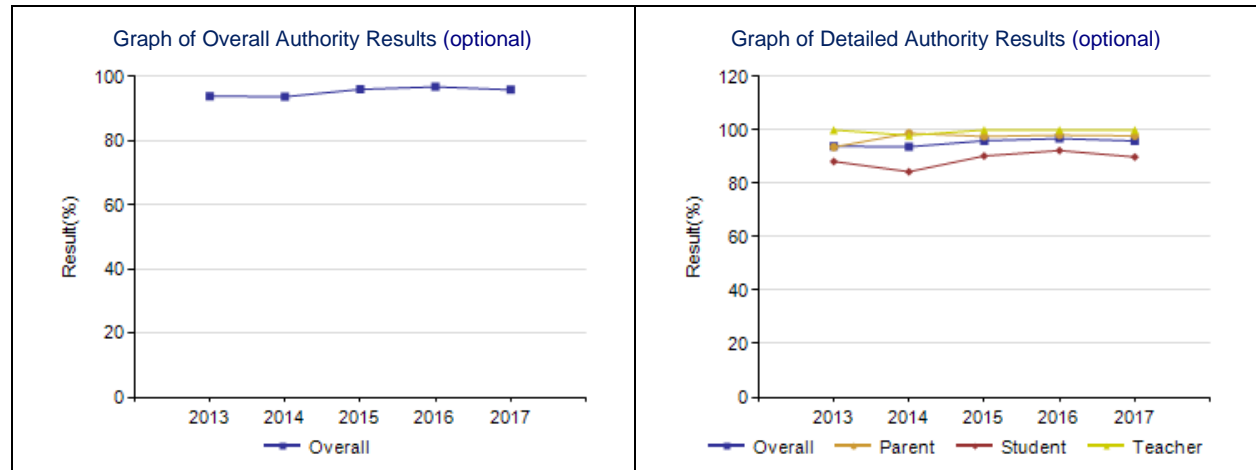


Notes:

1. Data values have been suppressed where the number of respondents/students is fewer than 6. Suppression is marked with an asterisk (*).

Education Quality – Measure Details (OPTIONAL)

Percentage of teachers, parents and students satisfied with the overall quality of basic education.										
	LWCA					Province				
	2013	2014	2015	2016	2017	2013	2014	2015	2016	2017
Overall	93.9	93.7	96.0	96.8	95.9	89.8	89.2	89.5	90.1	90.1
Teacher	100.0	98.0	100.0	100.0	100.0	95.7	95.5	95.9	96.0	95.9
Parent	93.6	98.8	97.6	98.1	97.8	84.9	84.7	85.4	86.1	86.4
Student	88.2	84.4	90.3	92.3	89.9	88.7	87.3	87.4	88.0	88.1

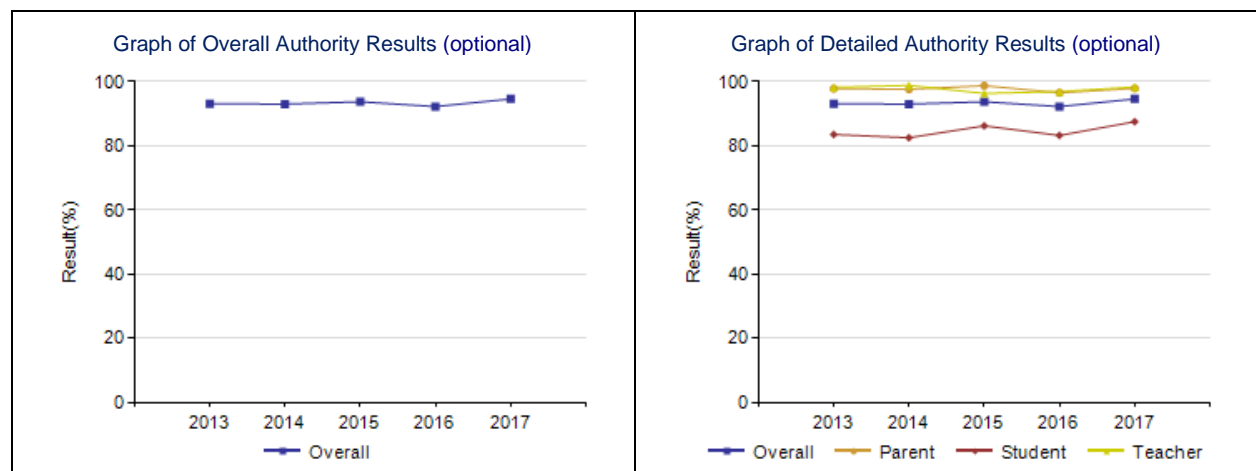


Notes:

1. Data values have been suppressed where the number of respondents/students is fewer than 6. Suppression is marked with an asterisk (*).

Safe and Caring – Measure Details (OPTIONAL)

Percentage of teacher, parent and student agreement that: students are safe at school, are learning the importance of caring for others, are learning respect for others and are treated fairly in school.										
	LWCA					Province				
	2013	2014	2015	2016	2017	2013	2014	2015	2016	2017
Overall	93.1	93.0	93.7	92.2	94.6	89.0	89.1	89.2	89.5	89.5
Teacher	98.2	98.8	96.3	96.9	98.3	95.0	95.3	95.4	95.4	95.3
Parent	97.8	97.6	98.7	96.5	97.9	87.8	88.9	89.3	89.8	89.9
Student	83.5	82.5	86.2	83.2	87.5	84.2	83.1	83.0	83.4	83.3



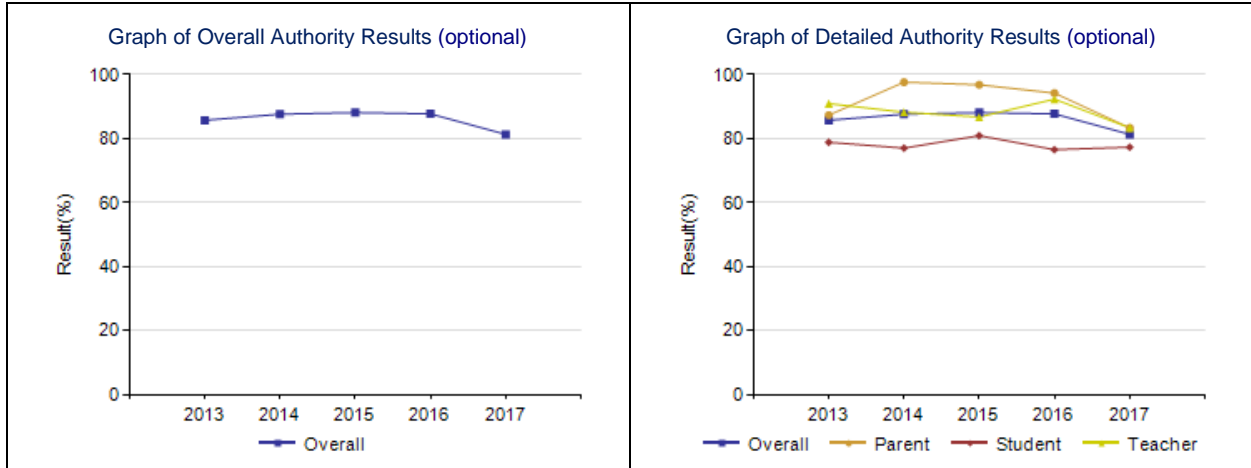
Notes:

1. Data values have been suppressed where the number of respondents/students is fewer than 6. Suppression is marked with an asterisk (*).

School Improvement – Measure Details (OPTIONAL)

Percentage of teachers, parents and students indicating that their school and schools in their jurisdiction have improved or stayed the same the last three years.

	LWCA					Province				
	2013	2014	2015	2016	2017	2013	2014	2015	2016	2017
Overall	85.7	87.6	88.1	87.7	81.3	80.6	79.8	79.6	81.2	81.4
Teacher	90.9	88.2	86.7	92.3	83.3	80.9	81.3	79.8	82.3	82.2
Parent	87.3	97.6	96.8	94.2	83.3	77.9	77.0	78.5	79.7	80.8
Student	78.8	77.0	80.9	76.5	77.3	82.9	81.2	80.7	81.5	81.1



Notes:

1. Data values have been suppressed where the number of respondents/students is fewer than 6. Suppression is marked with an asterisk (*).

PAT Results Course By Course Summary By Enrolled With Measure Evaluation (optional)

Course	Measure	Living Waters Christian Academ						Alberta				
		Achievement	Improvement	Overall	2017		Prev 3 Year Average		2017		Prev 3 Year Average	
					N	%	N	%	N	%	N	%
English Language Arts 6	Acceptable Standard	Very High	Maintained	Excellent	16	100.0	18	96.5	49,572	82.5	46,989	82.5
	Standard of Excellence	Very High	Maintained	Excellent	16	43.8	18	29.5	49,572	18.9	46,989	19.2
Mathematics 6	Acceptable Standard	Very High	Maintained	Excellent	16	93.8	18	88.9	49,507	69.4	46,906	73.0
	Standard of Excellence	Intermediate	Maintained	Acceptable	16	12.5	18	20.6	49,507	12.6	46,906	14.5
Science 6	Acceptable Standard	Very High	Maintained	Excellent	16	100.0	18	94.5	49,501	76.9	46,914	76.7
	Standard of Excellence	Very High	Maintained	Excellent	16	50.0	18	57.4	49,501	29.0	46,914	25.8
Social Studies 6	Acceptable Standard	Very High	Improved	Excellent	16	100.0	18	88.4	49,485	72.9	46,903	70.5
	Standard of Excellence	Intermediate	Maintained	Acceptable	16	18.8	18	33.9	49,485	21.7	46,903	18.9
English Language Arts 9	Acceptable Standard	Very High	Maintained	Excellent	16	100.0	15	94.7	45,487	76.8	43,746	76.3
	Standard of Excellence	High	Maintained	Good	16	18.8	15	16.8	45,487	14.9	43,746	14.9
Mathematics 9	Acceptable Standard	High	Maintained	Good	16	75.0	15	85.3	45,020	67.2	43,295	66.7
	Standard of Excellence	Very High	Maintained	Excellent	16	25.0	15	29.0	45,020	19.0	43,295	17.6
Science 9	Acceptable Standard	Very High	Maintained	Excellent	16	87.5	15	91.6	45,445	74.0	43,808	73.8
	Standard of Excellence	Very High	Maintained	Excellent	16	25.0	15	31.2	45,445	21.4	43,808	22.4
Social Studies 9	Acceptable Standard	Very High	Maintained	Excellent	16	93.8	15	92.2	45,484	67.0	43,722	65.1
	Standard of Excellence	Very High	Maintained	Excellent	16	37.5	15	30.6	45,484	20.2	43,722	19.2

Notes:

4. Data values have been suppressed where the number of respondents/students is fewer than 6. Suppression is marked with an asterisk (*).
5. Achievement Evaluation is not calculated for courses that do not have sufficient data available, either due to too few jurisdictions offering the course or because of changes in tests.
6. Participation in Provincial Achievement Tests was impacted by the flooding in June 2013 (Grade 9 only) and by the fires in May to June 2016. Caution should be used when interpreting trends over time for the province and those school authorities affected by these events.

Measure Evaluation Reference - Achievement Evaluation

Achievement evaluation is based upon a comparison of Current Year data to a set of standards which remain consistent over time. The Standards are calculated by taking the 3 year average of baseline data for each measure across all school jurisdictions and calculating the 5th, 25th, 75th, and 95th percentiles. Once calculated, these standards remain in place from year to year to allow for consistent planning and evaluation.

The table below shows the range of values defining the 5 achievement evaluation levels for each measure.

Course	Measure	Very Low	Low	Intermediate	High	Very High
English Language Arts 6	Acceptable Standard	0.00 - 67.95	67.95 - 78.40	78.40 - 86.09	86.09 - 91.37	91.37 - 100.00
	Standard of Excellence	0.00 - 6.83	6.83 - 11.65	11.65 - 17.36	17.36 - 22.46	22.46 - 100.00
Mathematics 6	Acceptable Standard	0.00 - 63.91	63.91 - 70.73	70.73 - 79.61	79.61 - 88.67	88.67 - 100.00
	Standard of Excellence	0.00 - 8.53	8.53 - 11.31	11.31 - 18.13	18.13 - 25.17	25.17 - 100.00
Science 6	Acceptable Standard	0.00 - 60.36	60.36 - 78.51	78.51 - 86.46	86.46 - 90.64	90.64 - 100.00
	Standard of Excellence	0.00 - 11.74	11.74 - 17.42	17.42 - 25.34	25.34 - 34.31	34.31 - 100.00
Social Studies 6	Acceptable Standard	0.00 - 58.97	58.97 - 68.15	68.15 - 76.62	76.62 - 83.55	83.55 - 100.00
	Standard of Excellence	0.00 - 7.30	7.30 - 12.45	12.45 - 19.08	19.08 - 30.09	30.09 - 100.00
English Language Arts 9	Acceptable Standard	0.00 - 63.55	63.55 - 75.66	75.66 - 83.70	83.70 - 90.27	90.27 - 100.00
	Standard of Excellence	0.00 - 5.96	5.96 - 9.43	9.43 - 14.72	14.72 - 20.46	20.46 - 100.00
Mathematics 9	Acceptable Standard	0.00 - 52.42	52.42 - 60.73	60.73 - 73.88	73.88 - 78.00	78.00 - 100.00
	Standard of Excellence	0.00 - 8.18	8.18 - 12.49	12.49 - 18.10	18.10 - 24.07	24.07 - 100.00
Science 9	Acceptable Standard	0.00 - 50.57	50.57 - 60.14	60.14 - 72.50	72.50 - 76.89	76.89 - 100.00
	Standard of Excellence	0.00 - 3.39	3.39 - 6.71	6.71 - 11.81	11.81 - 15.85	15.85 - 100.00
Social Studies 9	Acceptable Standard	0.00 - 56.26	56.26 - 62.27	62.27 - 74.04	74.04 - 79.85	79.85 - 100.00
	Standard of Excellence	0.00 - 10.03	10.03 - 12.78	12.78 - 19.76	19.76 - 24.03	24.03 - 100.00

Notes:

- The range of values at each evaluation level is interpreted as greater than or equal to the lower value, and less than the higher value. For the Very High evaluation level, values range from greater than or equal to the lower value to 100%.
- Participation in Provincial Achievement Tests was impacted by the flooding in June 2013 (Grade 9 only) and by the fires in May to June 2016. Caution should be used when interpreting trends over time for the province and those school authorities affected by these events.
- Achievement Evaluation is not calculated for courses that do not have sufficient data available, either due to too few jurisdictions offering the course or because of changes in tests.

Improvement Table

For each jurisdiction, improvement evaluation consists of comparing the Current Year result for each measure with the previous three-year average. A chi-square statistical test is used to determine the significance of the improvement. This test takes into account the size of the jurisdiction in the calculation to make improvement evaluation fair across jurisdictions of different sizes.

The table below shows the definition of the 5 improvement evaluation levels based upon the chi-square result.

Evaluation Category	Chi-Square Range
Declined Significantly	3.84 + (current < previous 3-year average)
Declined	1.00 - 3.83 (current < previous 3-year average)
Maintained	less than 1.00
Improved	1.00 - 3.83 (current > previous 3-year average)
Improved Significantly	3.84 + (current > previous 3-year average)

Overall Evaluation Table

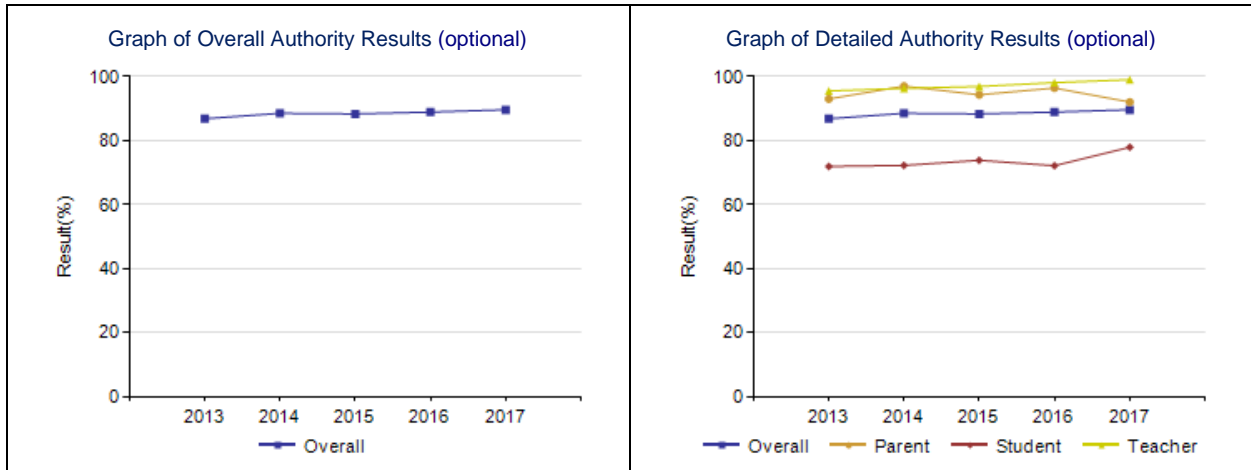
The overall evaluation combines the Achievement Evaluation and the Improvement Evaluation. The table below illustrates how the Achievement and Improvement evaluations are combined to get the overall evaluation.

	Achievement				
	Very High	High	Intermediate	Low	Very Low
Improved Significantly	Excellent	Good	Good	Good	Acceptable
Improved	Excellent	Good	Good	Acceptable	Issue
Maintained	Excellent	Good	Acceptable	Issue	Concern
Declined	Good	Acceptable	Issue	Issue	Concern
Declined Significantly	Acceptable	Issue	Issue	Concern	Concern

Program of Studies – Measure Details (OPTIONAL)

Percentage of teachers, parents and students satisfied with the opportunity for students to receive a broad program of studies including fine arts, career, technology, and health and physical education.

	LWCA					Province				
	2013	2014	2015	2016	2017	2013	2014	2015	2016	2017
Overall	86.8	88.5	88.3	88.9	89.6	81.5	81.3	81.3	81.9	81.9
Teacher	95.5	96.3	96.9	98.1	99.0	87.9	87.5	87.2	88.1	88.0
Parent	93.0	97.0	94.3	96.4	92.0	78.9	79.9	79.9	80.1	80.1
Student	71.9	72.2	73.8	72.1	77.9	77.8	76.6	76.9	77.5	77.7

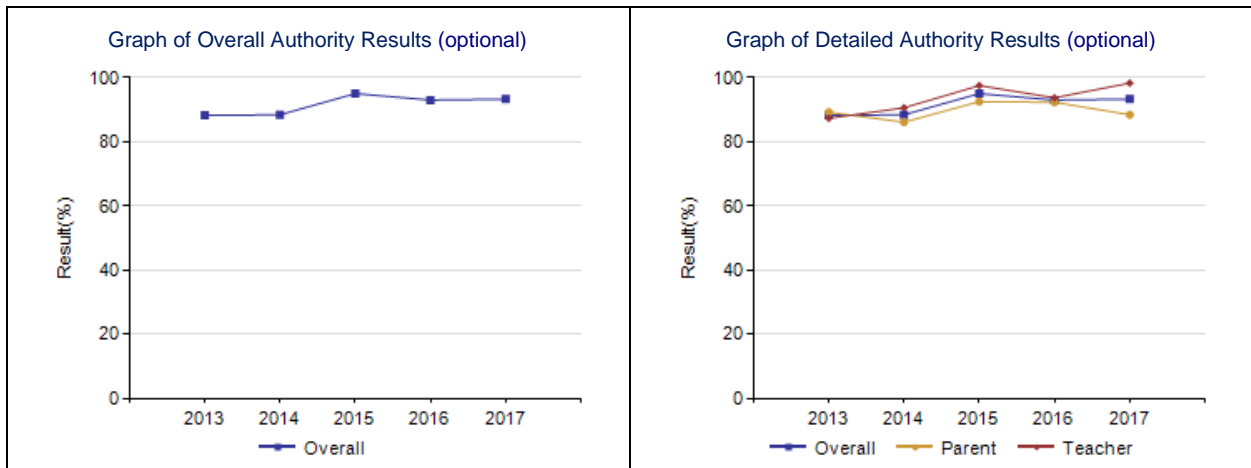


- Notes:
- Data values have been suppressed where the number of respondents/students is fewer than 6. Suppression is marked with an asterisk (*).
 - Survey results for the province and school authorities were impacted by the changes in the number of students responding to the survey through the introduction of the OurSCHOOL/TTFM (Tell Them From Me) survey in 2014.

Parental Involvement – Measure Details (OPTIONAL)

Percentage of teachers and parents satisfied with parental involvement in decisions about their child's education.

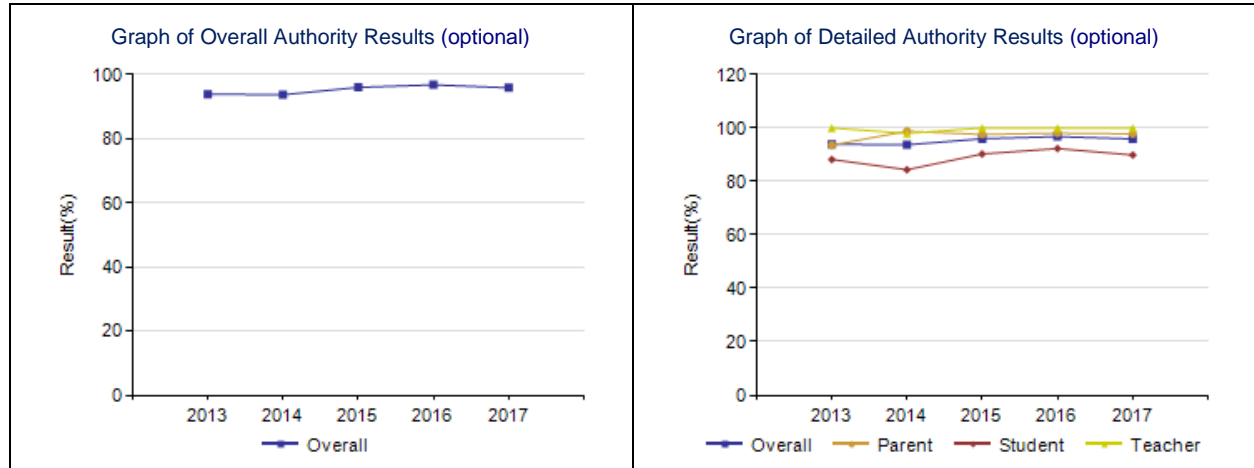
	LWCA					Province				
	2013	2014	2015	2016	2017	2013	2014	2015	2016	2017
Overall	88.2	88.4	95.0	93.0	93.3	80.3	80.6	80.7	80.9	81.2
Teacher	87.3	90.6	97.5	93.7	98.3	88.5	88.0	88.1	88.4	88.5
Parent	89.2	86.1	92.5	92.3	88.4	72.2	73.1	73.4	73.5	73.9



- Notes:
- Data values have been suppressed where the number of respondents/students is fewer than 6. Suppression is marked with an asterisk (*).

Education Quality – Measure Details (OPTIONAL)

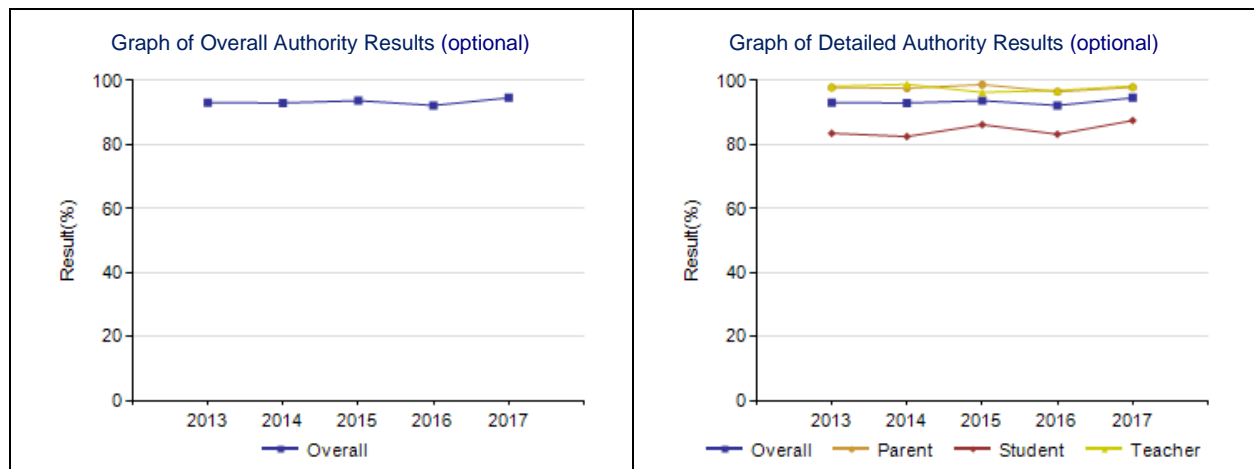
Percentage of teachers, parents and students satisfied with the overall quality of basic education.										
	LWCA					Province				
	2013	2014	2015	2016	2017	2013	2014	2015	2016	2017
Overall	93.9	93.7	96.0	96.8	95.9	89.8	89.2	89.5	90.1	90.1
Teacher	100.0	98.0	100.0	100.0	100.0	95.7	95.5	95.9	96.0	95.9
Parent	93.6	98.8	97.6	98.1	97.8	84.9	84.7	85.4	86.1	86.4
Student	88.2	84.4	90.3	92.3	89.9	88.7	87.3	87.4	88.0	88.1



- Notes:
- Data values have been suppressed where the number of respondents/students is fewer than 6. Suppression is marked with an asterisk (*).
 - Survey results for the province and school authorities were impacted by the changes in the number of students responding to the survey through the introduction of the OurSCHOOL/TTFM (Tell Them From Me) survey in 2014.

Safe and Caring – Measure Details (OPTIONAL)

Percentage of teacher, parent and student agreement that: students are safe at school, are learning the importance of caring for others, are learning respect for others and are treated fairly in school.										
	LWCA					Province				
	2013	2014	2015	2016	2017	2013	2014	2015	2016	2017
Overall	93.1	93.0	93.7	92.2	94.6	89.0	89.1	89.2	89.5	89.5
Teacher	98.2	98.8	96.3	96.9	98.3	95.0	95.3	95.4	95.4	95.3
Parent	97.8	97.6	98.7	96.5	97.9	87.8	88.9	89.3	89.8	89.9
Student	83.5	82.5	86.2	83.2	87.5	84.2	83.1	83.0	83.4	83.3

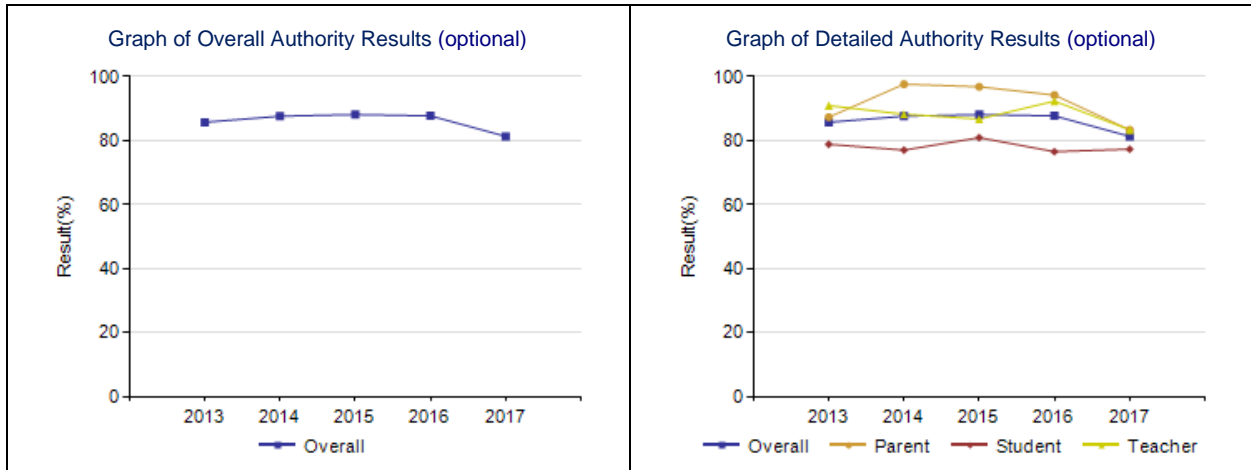


- Notes:
- Data values have been suppressed where the number of respondents/students is fewer than 6. Suppression is marked with an asterisk (*).
 - Survey results for the province and school authorities were impacted by the changes in the number of students responding to the survey through the introduction of the OurSCHOOL/TTFM (Tell Them From Me) survey in 2014.

School Improvement – Measure Details (OPTIONAL)

Percentage of teachers, parents and students indicating that their school and schools in their jurisdiction have improved or stayed the same the last three years.

	LWCA					Province				
	2013	2014	2015	2016	2017	2013	2014	2015	2016	2017
Overall	85.7	87.6	88.1	87.7	81.3	80.6	79.8	79.6	81.2	81.4
Teacher	90.9	88.2	86.7	92.3	83.3	80.9	81.3	79.8	82.3	82.2
Parent	87.3	97.6	96.8	94.2	83.3	77.9	77.0	78.5	79.7	80.8
Student	78.8	77.0	80.9	76.5	77.3	82.9	81.2	80.7	81.5	81.1



Notes:

- Data values have been suppressed where the number of respondents/students is fewer than 6. Suppression is marked with an asterisk (*).